



Los Angeles Pierce College

Content

- **Introduction**
- **Enrollment Trends**
- **Demographic Characteristics**
- **Transfers**
- **Financial Aid**
- **Math Sequence**

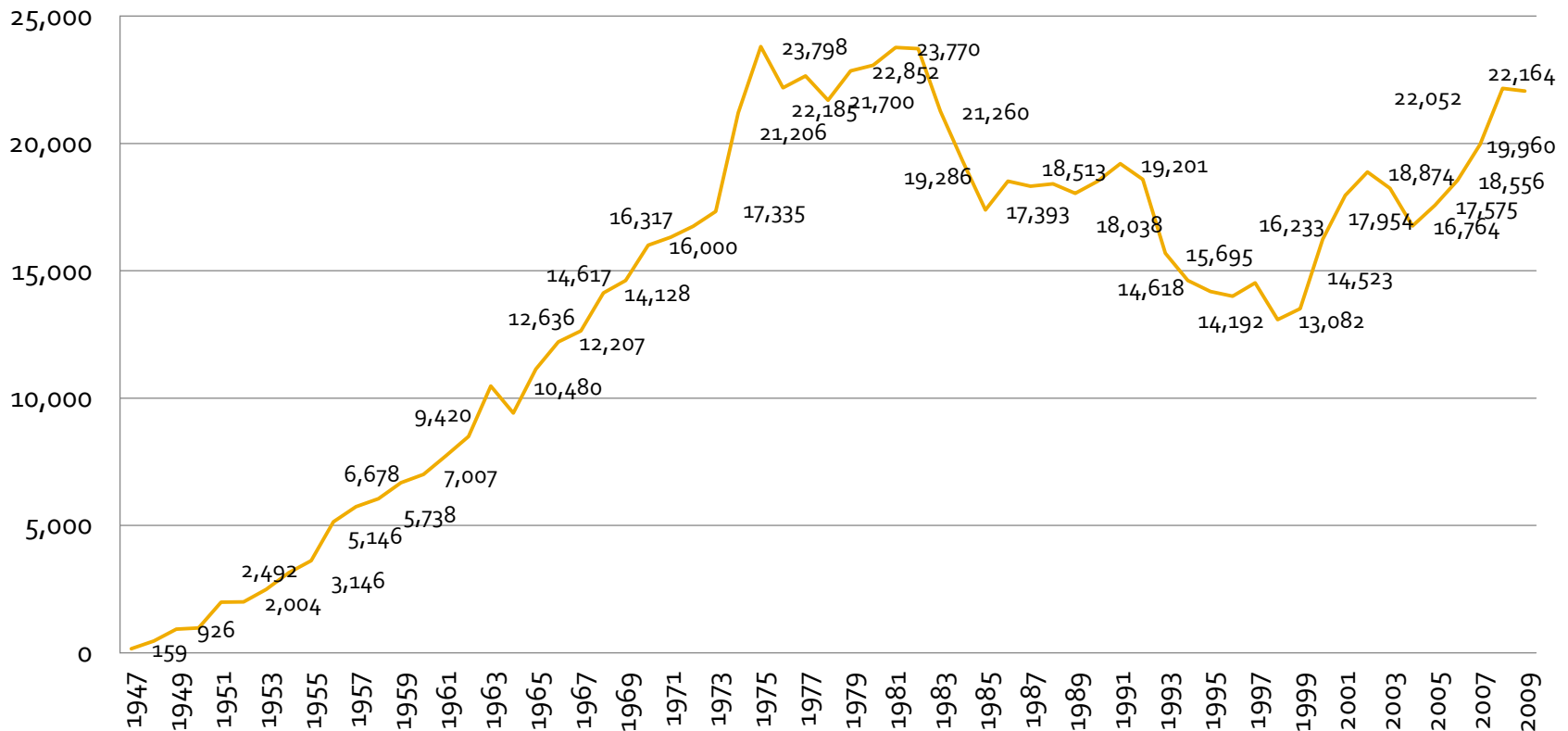
Introduction



- **Los Angeles Pierce College is a two-year community college that serves more than 20,000 students in Woodland Hills, a community within the San Fernando Valley region of the city of Los Angeles.**
- **Website:**
www.piercecollege.edu

Enrollment Trends

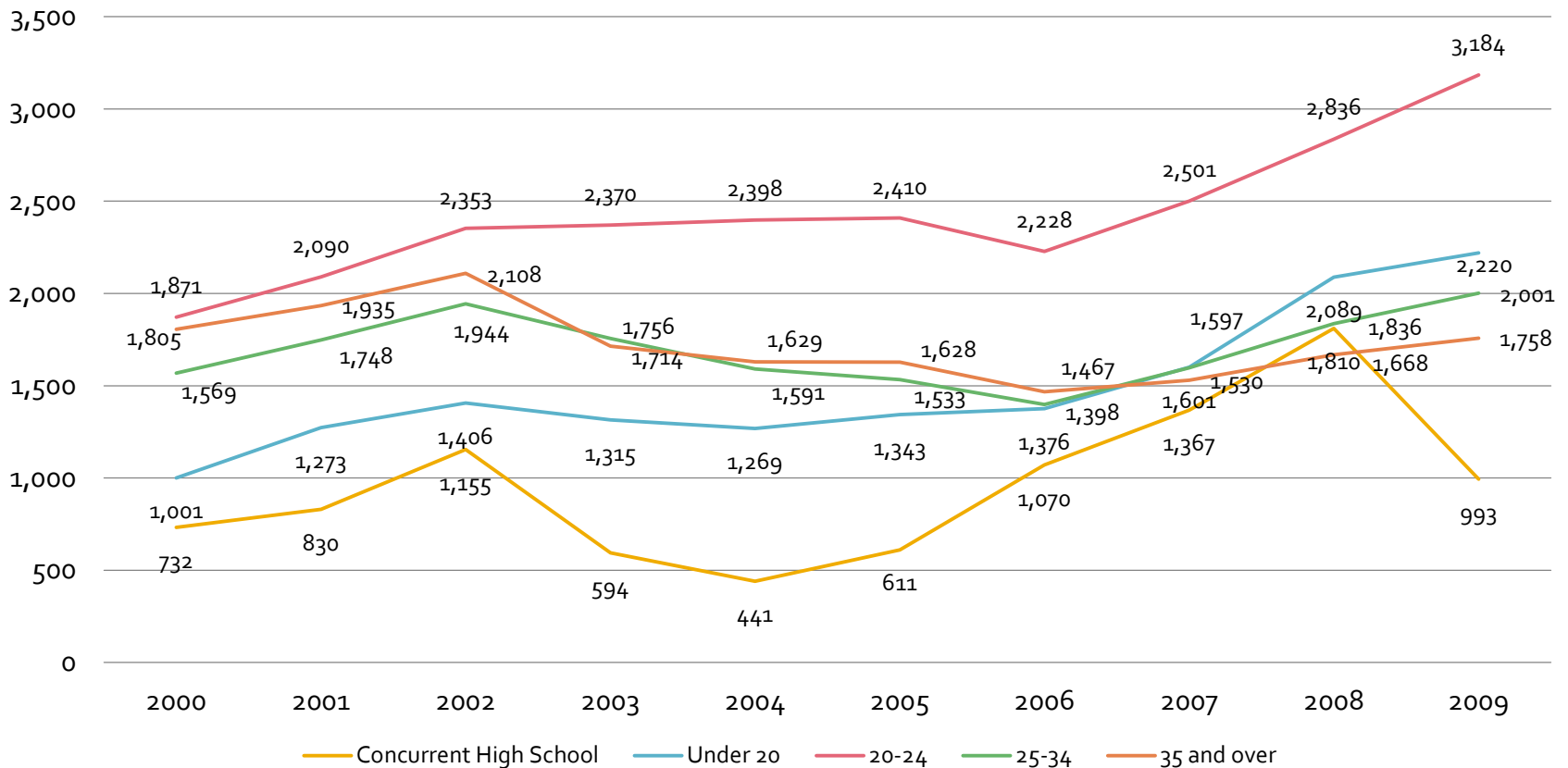
Enrolled: Fall 1947 - 2009



- Increase in enrollment from 1947 through 1975
- Decrease in enrollment from 1983 through 1999
- Steady increase in enrollment from 1999 to present

Enrollment Trends

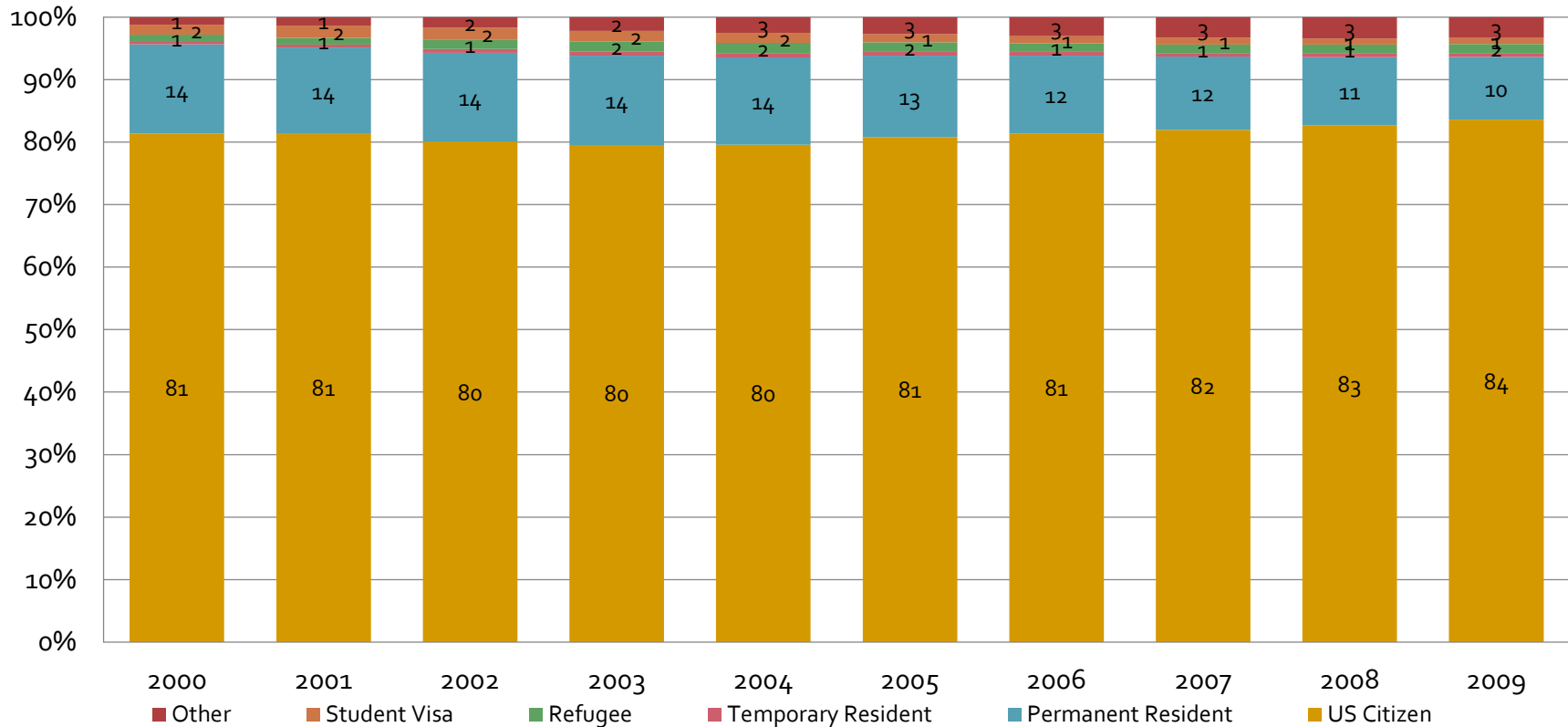
Enrolled by Age: Fall 2000 - 2009



- Majority of the students enrolled are of the ages 20-24

Demographics Characteristics

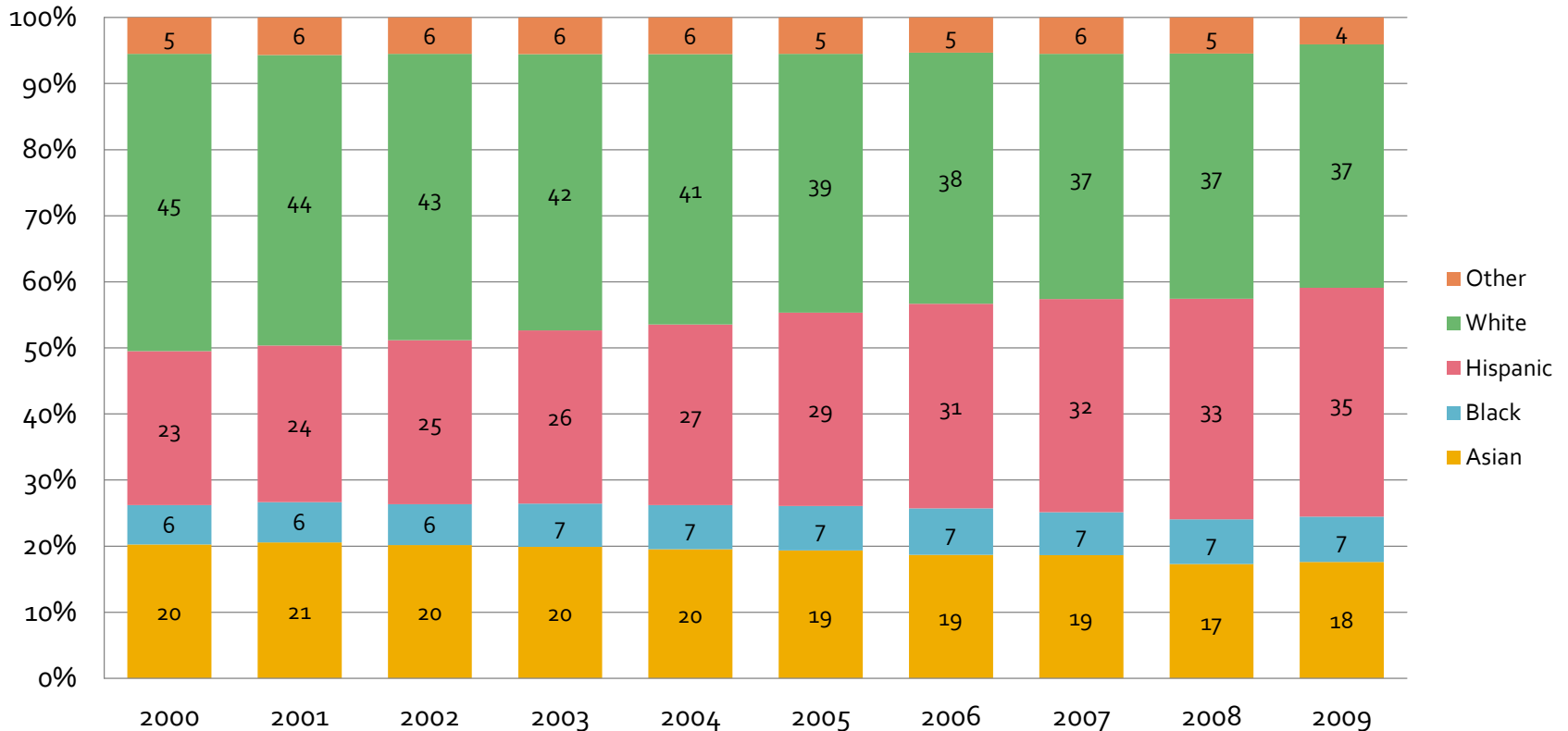
% Enrolled by Citizenship: Fall 2000 - 2009



- **Stable enrollment trends by citizenship**
- **Majority of students are U.S. citizens**

Demographics Characteristics

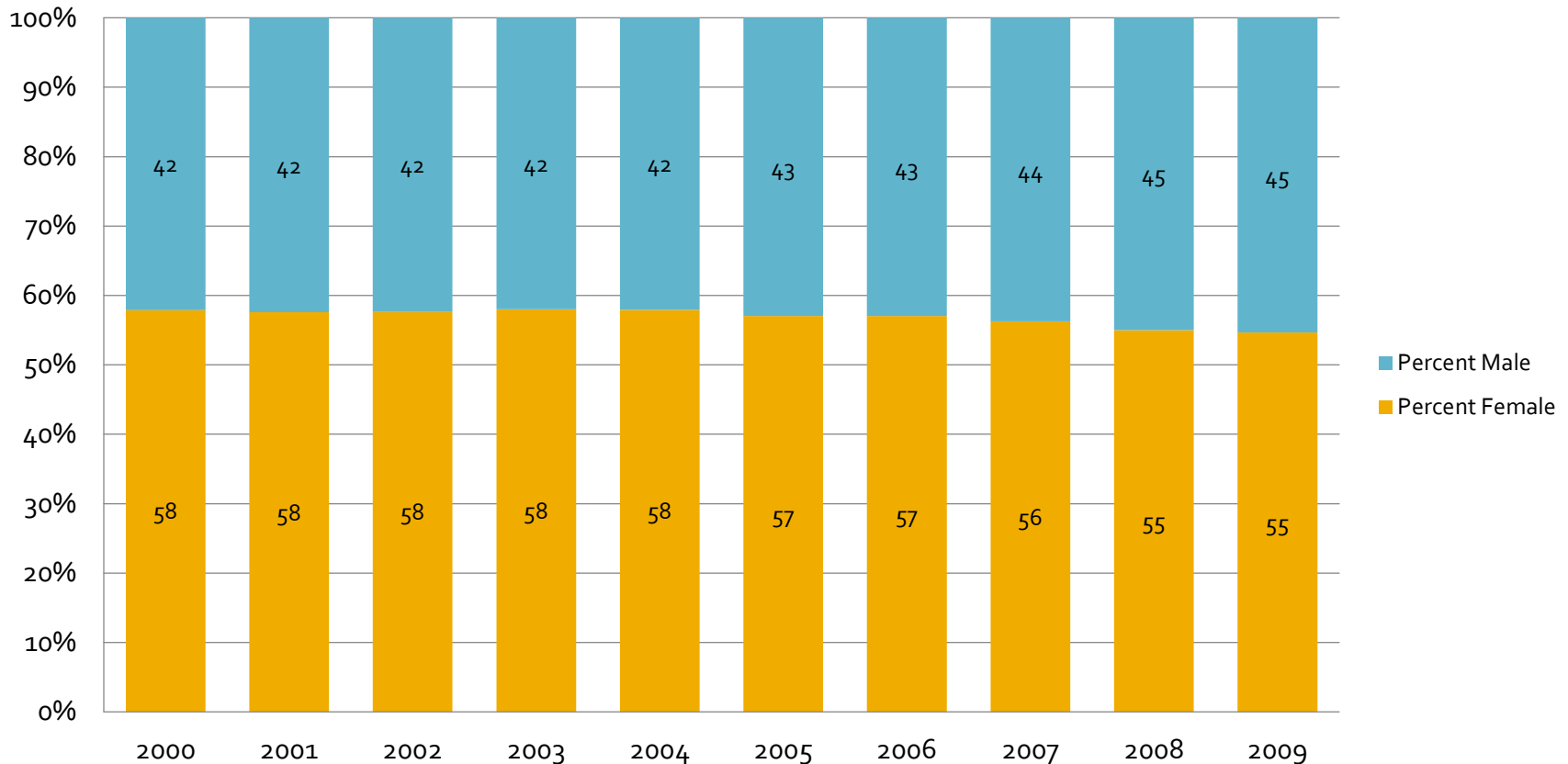
% Enrolled by Ethnicity: Fall 2000 - 2009



- Majority of students are white and Hispanic
- Asians are the third biggest population

Demographics Characteristics

% Enrolled by Gender: Fall 2000 - 2009



- **Steady enrollment of ~55% females and ~45% males**

Demographics Characteristics

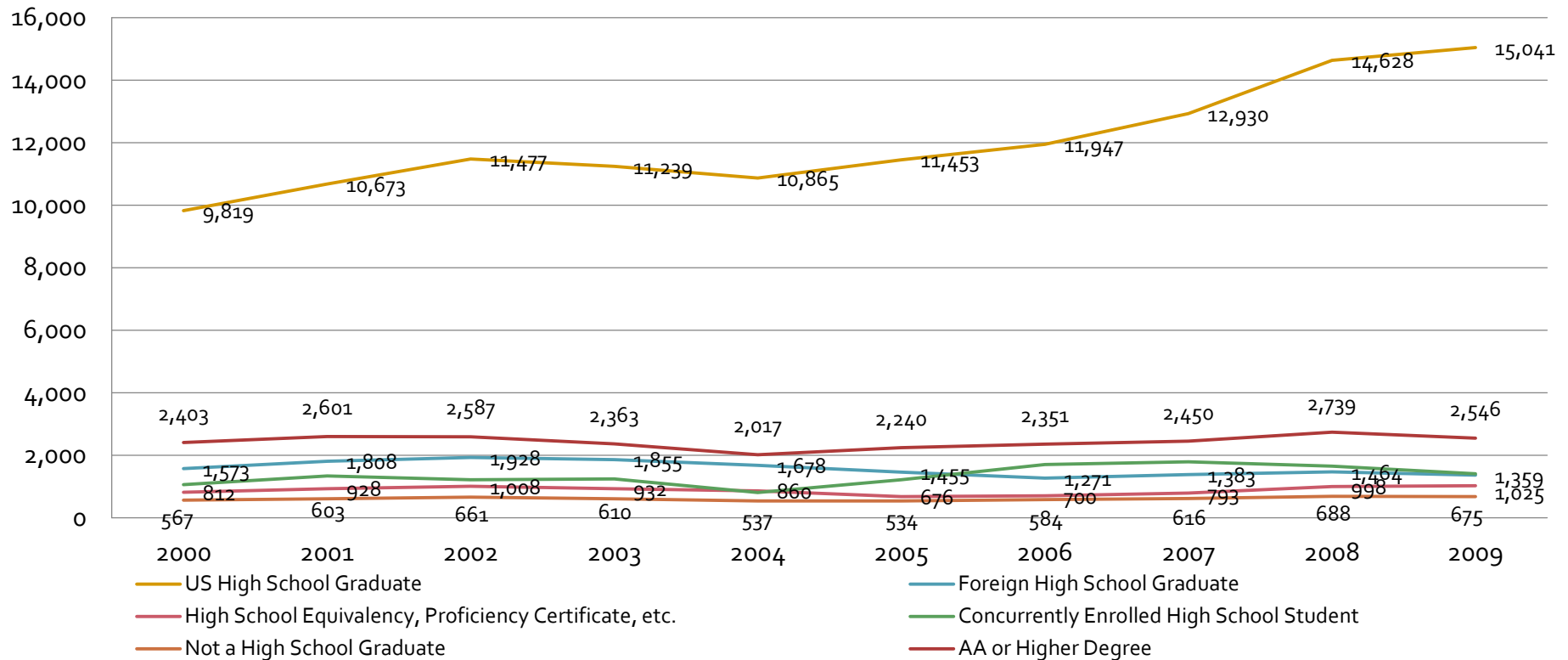
% Enrolled by Home Language: Fall 2000 - 2009



- **Majority of the students are English speakers**

Demographics Characteristics

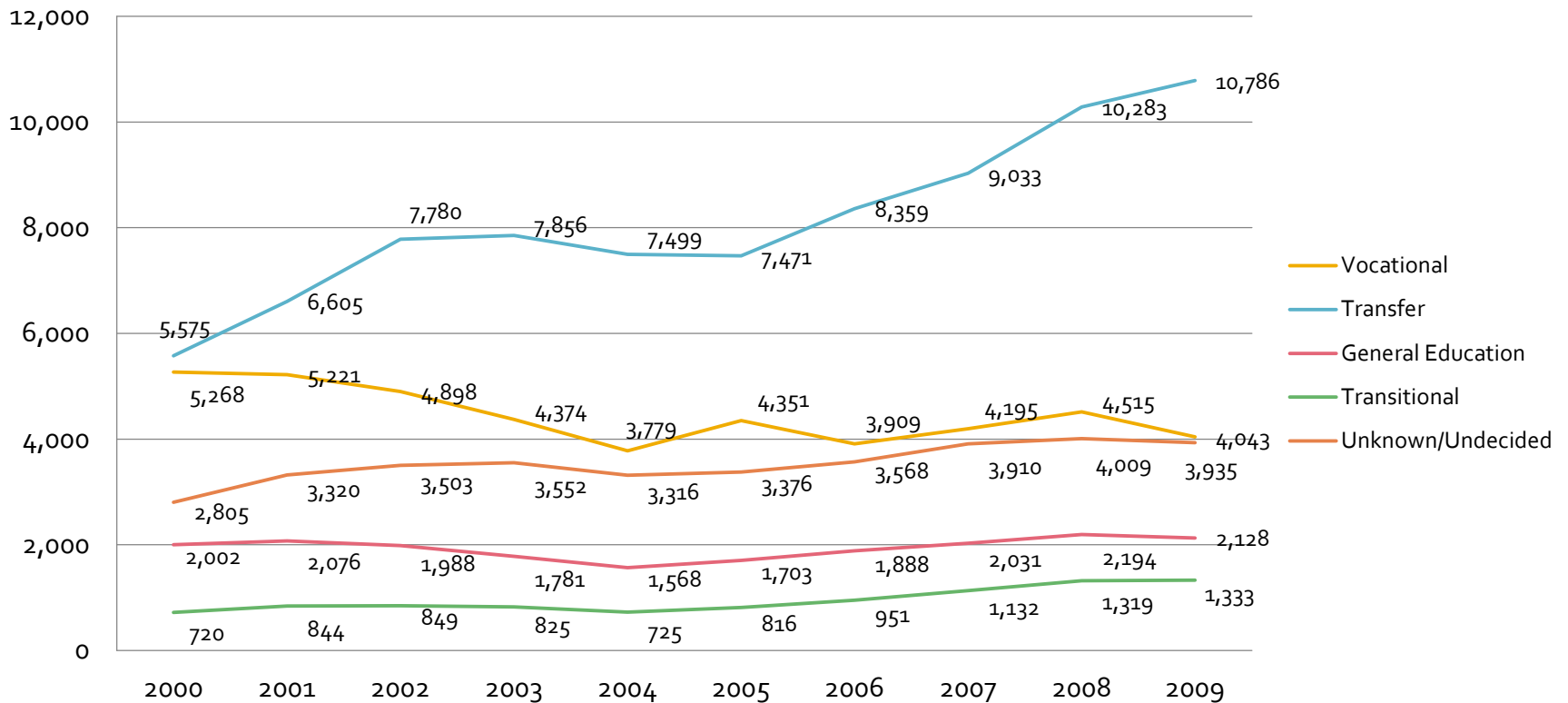
Enrolled by Educational Attainment: Fall 2000 - 2009



Majority of students enrolled are U.S. high school graduates

Transfers

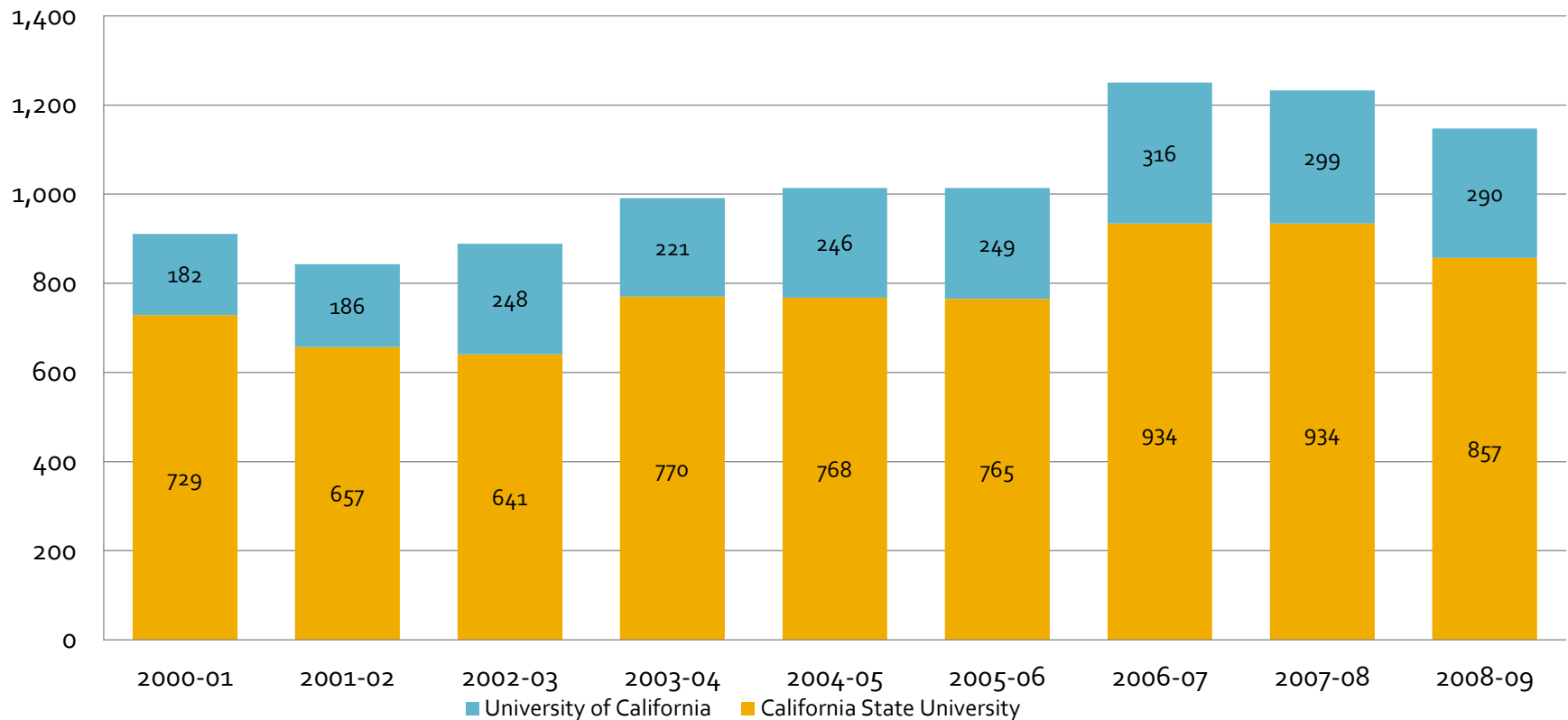
Enrolled by Educational Goal: Fall 2000 - 2009



- Majority of students aim to transfer

Transfers

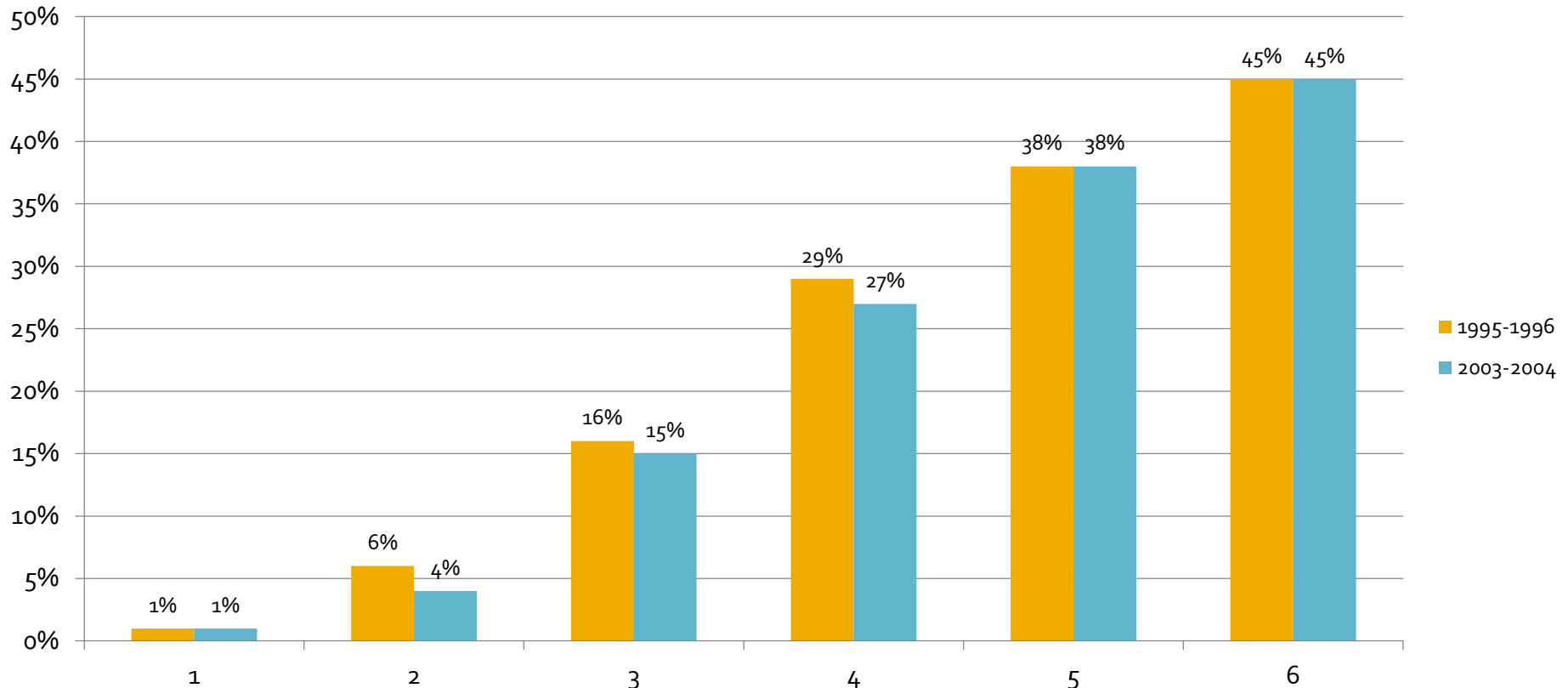
of Transfer Students to a UC or CSU: 2000 - 2009



- **Steady trends**
- **Majority of students transfer to a CSU**

Transfers

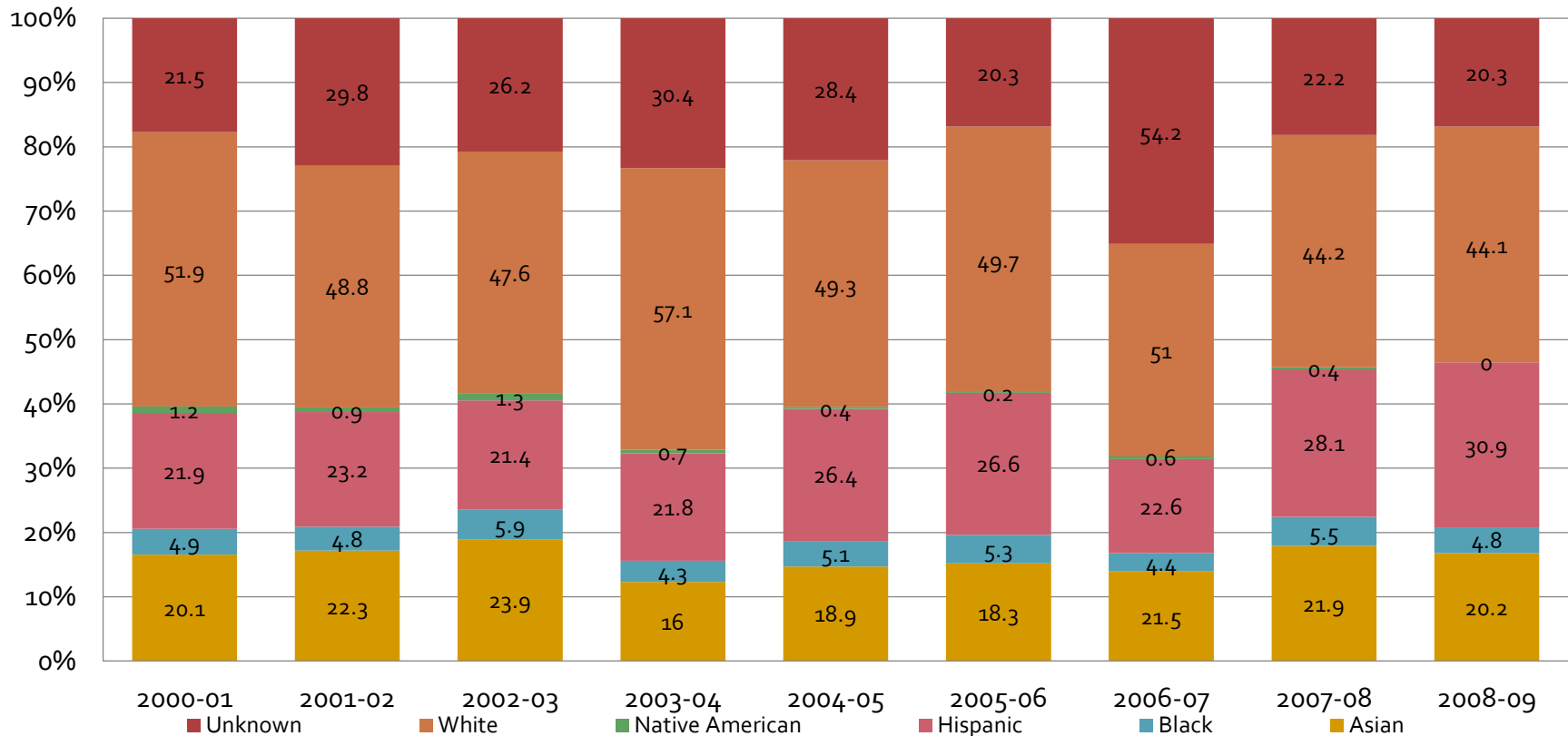
Transfer Velocity Cohort Report (6 Years)



- **Approximately 45% of students who wanted to transfer successfully transferred**

Transfers

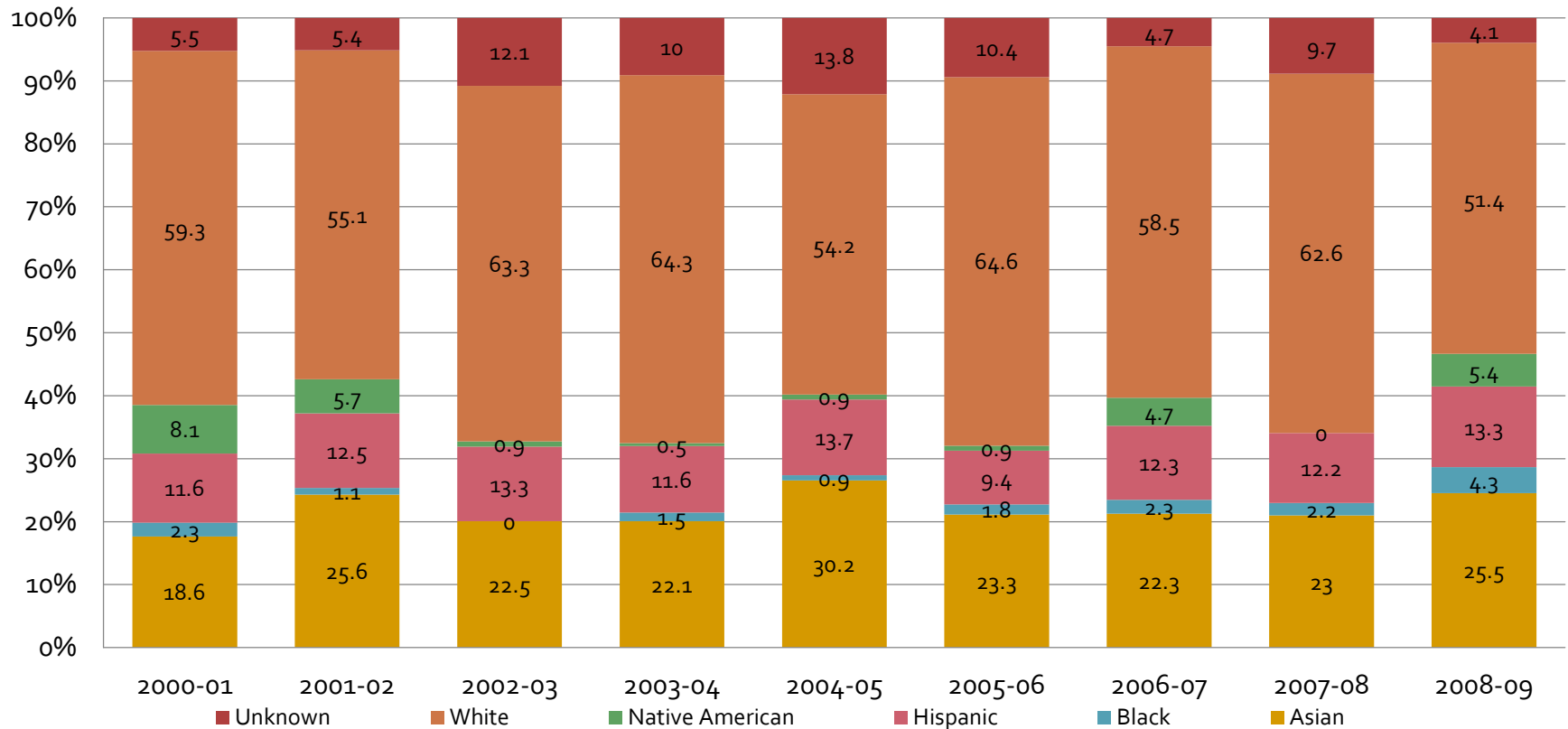
% of Transfer Students to CSU by Ethnicity: 2000 - 2009



- **Majority of students who transfer to a CSU are white**
- **Steady trends**

Transfers

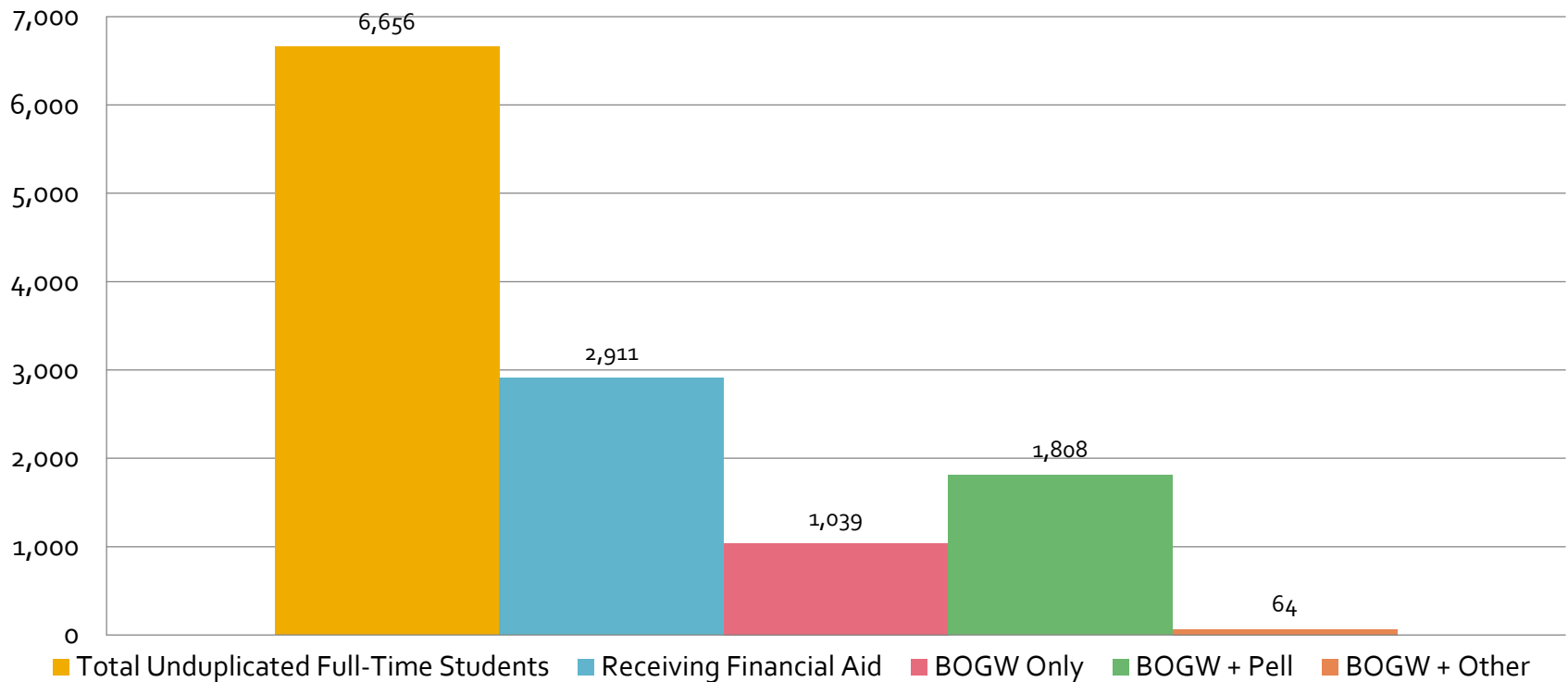
% of Transfer Students to UC by Ethnicity: 2000 - 2009



- **Majority of transfers to a UC are white**
- **Steady trends**

Financial Aid

**# of Full-Time Students Receiving Financial Aid
2007-2008 Academic Year**



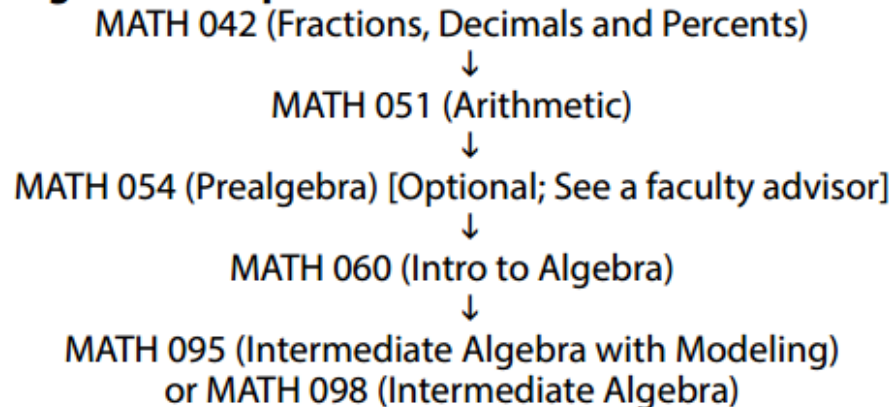
- **Approximately 43% of students receive some form of financial aid**

Math Sequence

MATH COURSE SEQUENCE — GETTING STARTED

Initial placement in the sequence depends on COMPASS placement test scores.

Pre-College Level Sequence:



College Level Quantitative Skills (QS) Math Course Options

Course

MATH& 107: Contemporary Mathematics
MATH 114: Applied Algebra, Geometry, Trig
(only available at military sites)
MATH& 141: Precalculus I
MATH 147: Finite Mathematics
MATH& 131: Math for Elem Educ I
MATH& 146: Intro to Statistics

Prerequisite

MATH 095 or MATH 098
MATH 098
MATH 098
MATH 095 or MATH 098
MATH 095 or MATH 098