



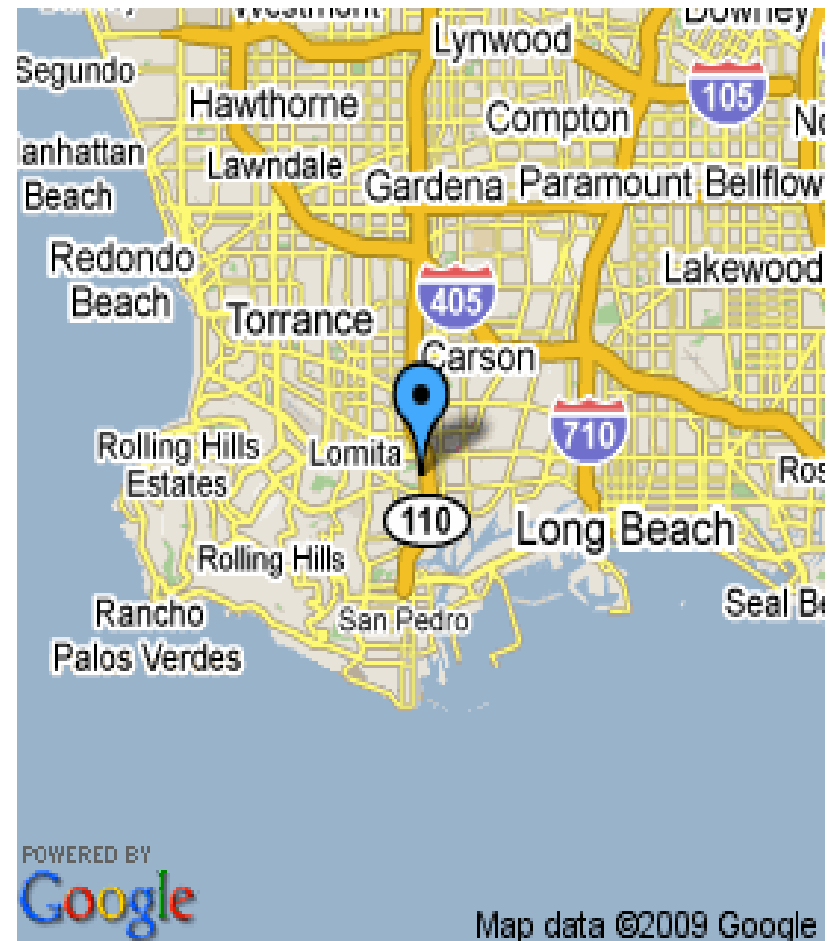
Los Angeles Harbor College

Content

- **Introduction**
- **Enrollment Trends**
- **Demographic Characteristics**
- **Transfers**
- **Financial Aid**
- **Math Sequence**

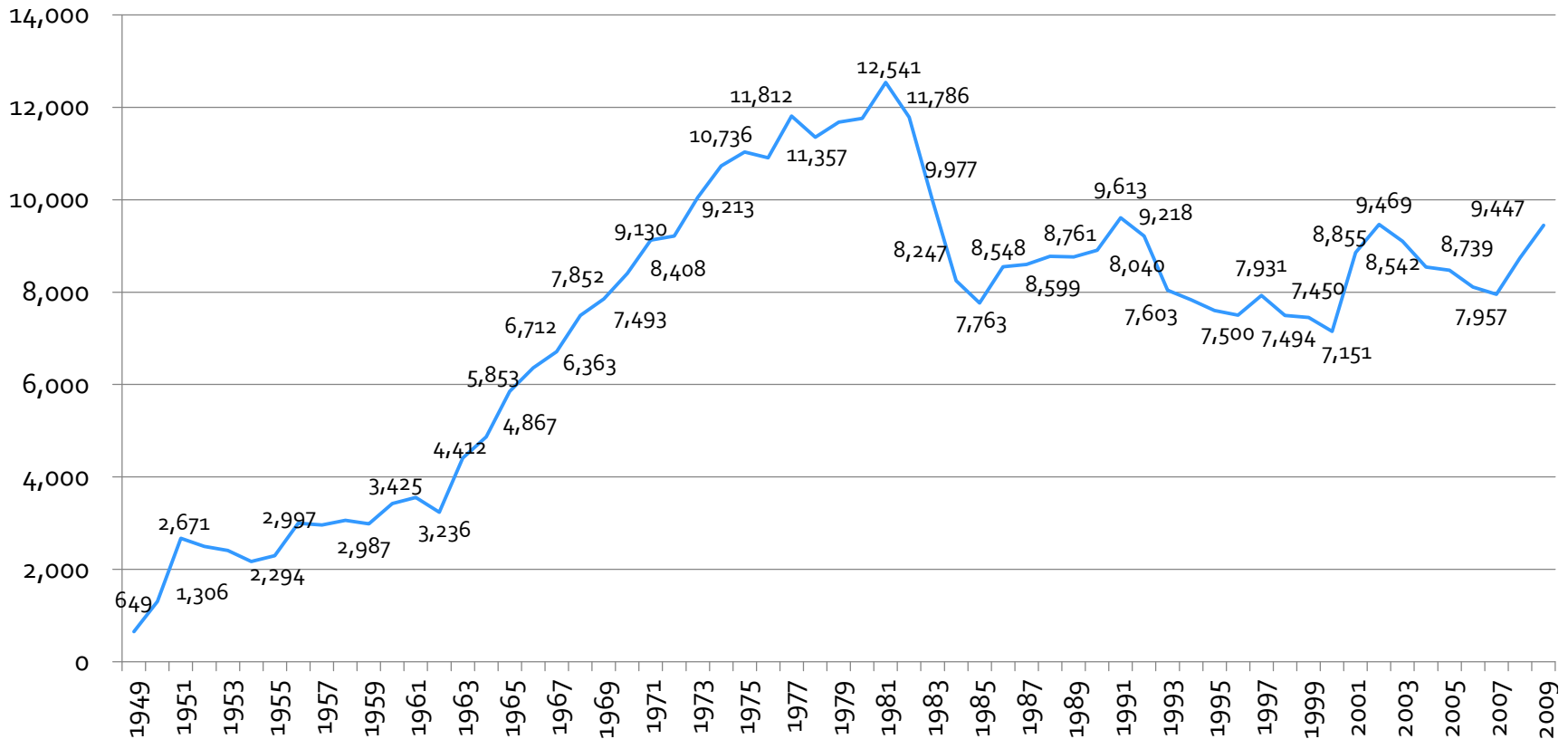
Introduction

- **Located off the 110 Harbor Freeway between Wilmington and Harbor City**
- **Website: www.lahc.edu**



Enrollment Trends

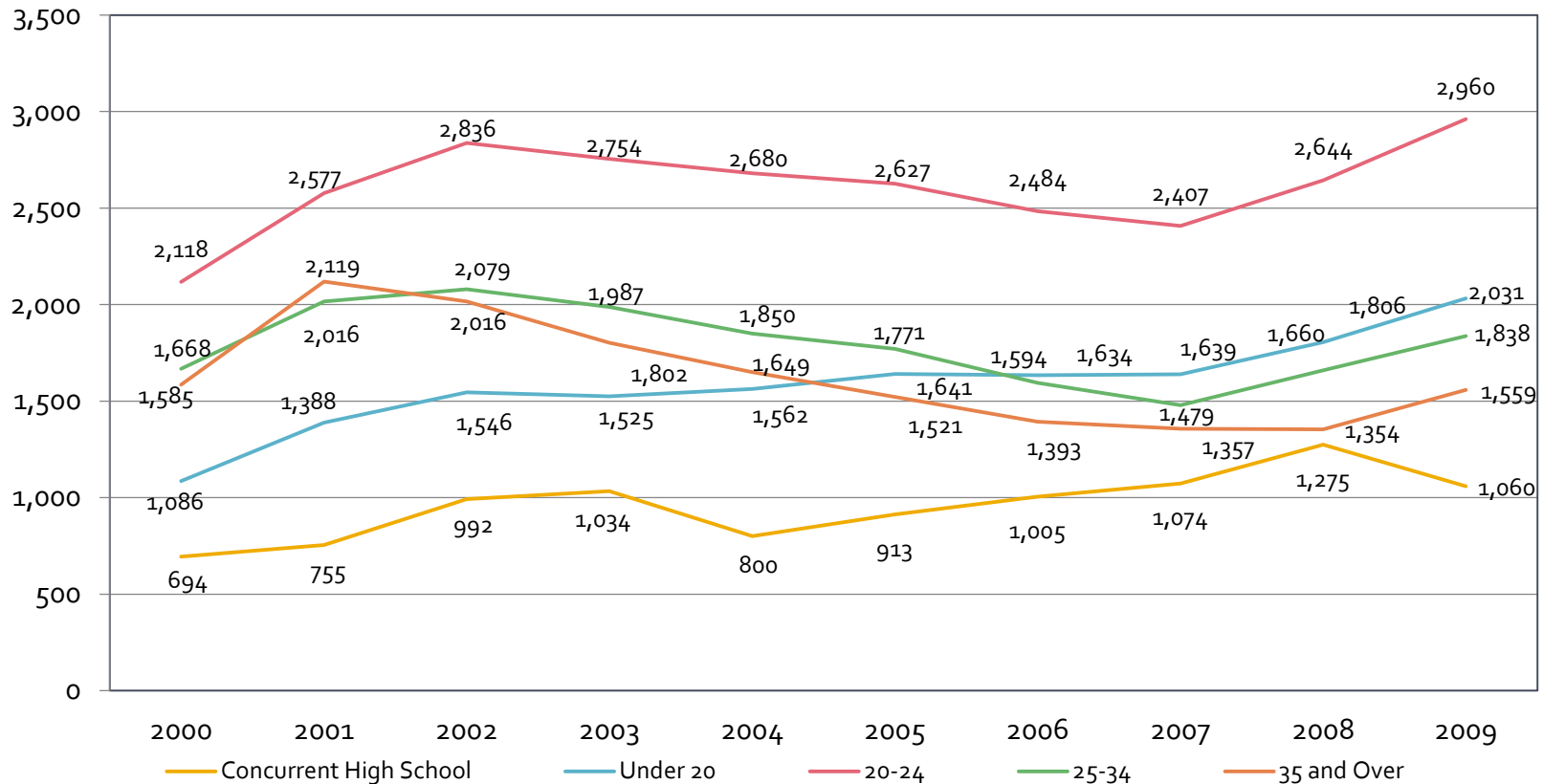
Enrolled: Fall 1949 - 2009



- **Steady increase from 1949 – 1980**
- **Decreasing trend from 1980 to now**

Enrollment Trends

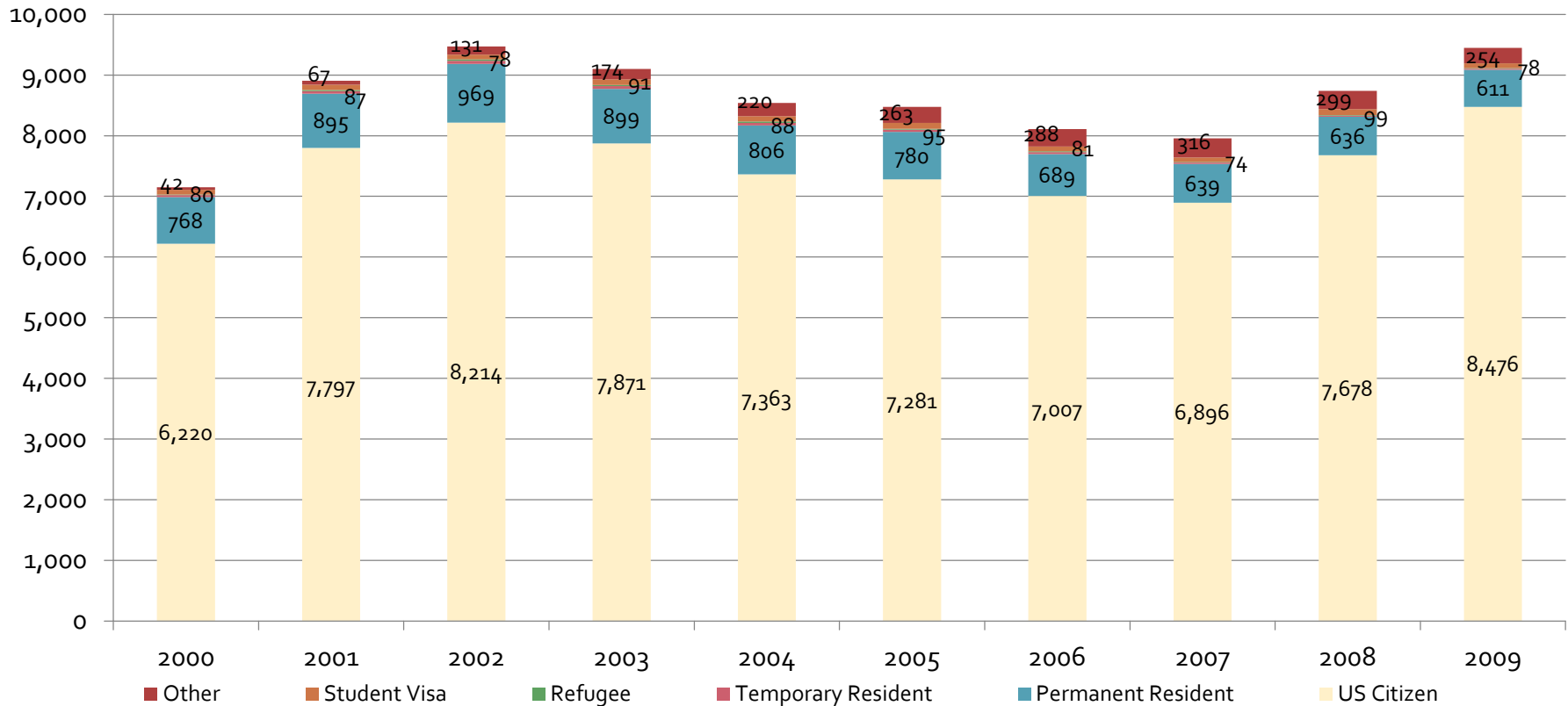
Enrolled by Age: Fall 2000 - 2009



- **Steady enrollment trends**
- **Slight decline in concurrent high school students**

Demographics Characteristics

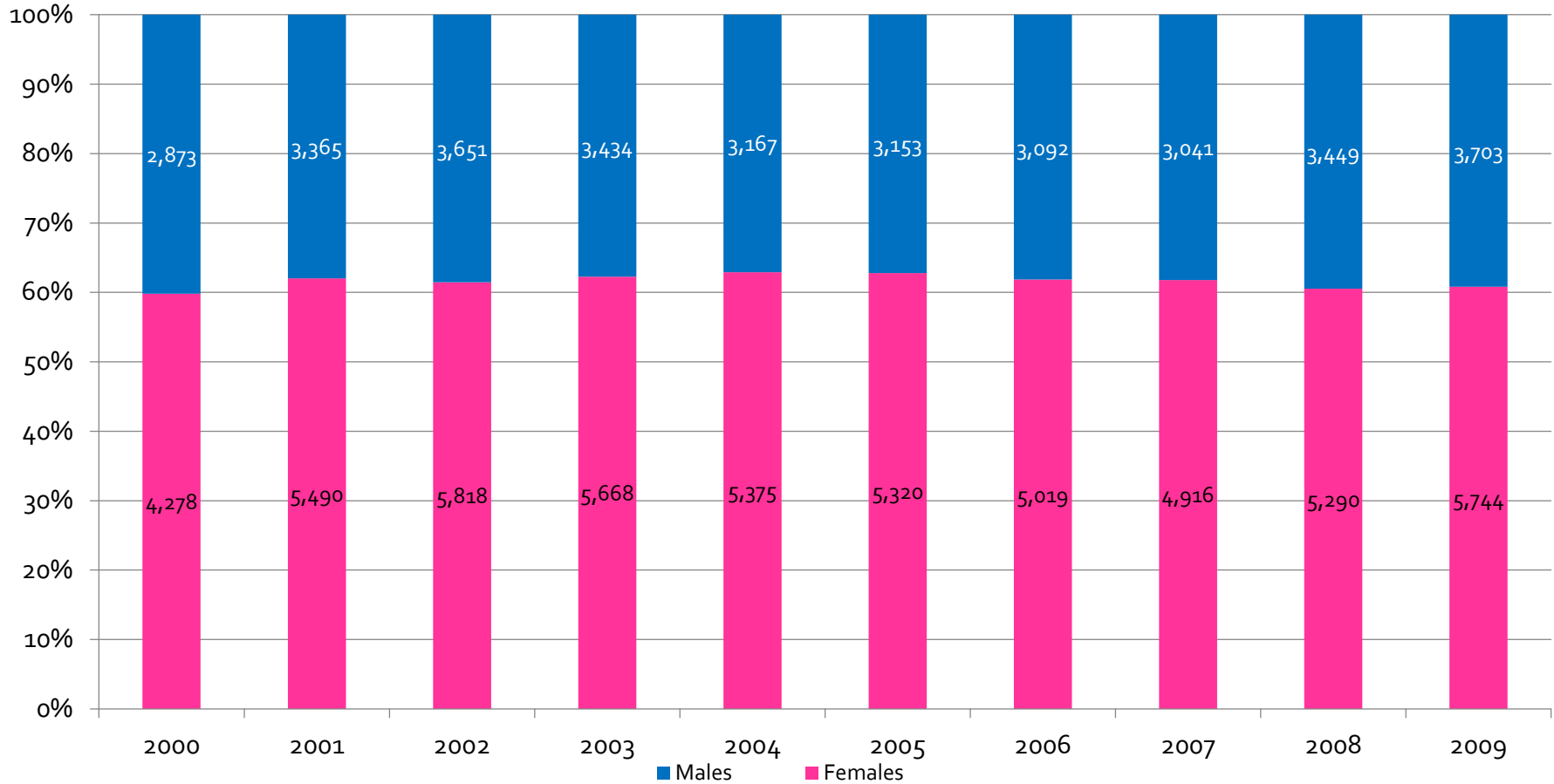
Enrolled by Citizenship: Fall 2000 - 2009



- Majority of students are US citizens, followed by permanent residents

Demographics Characteristics

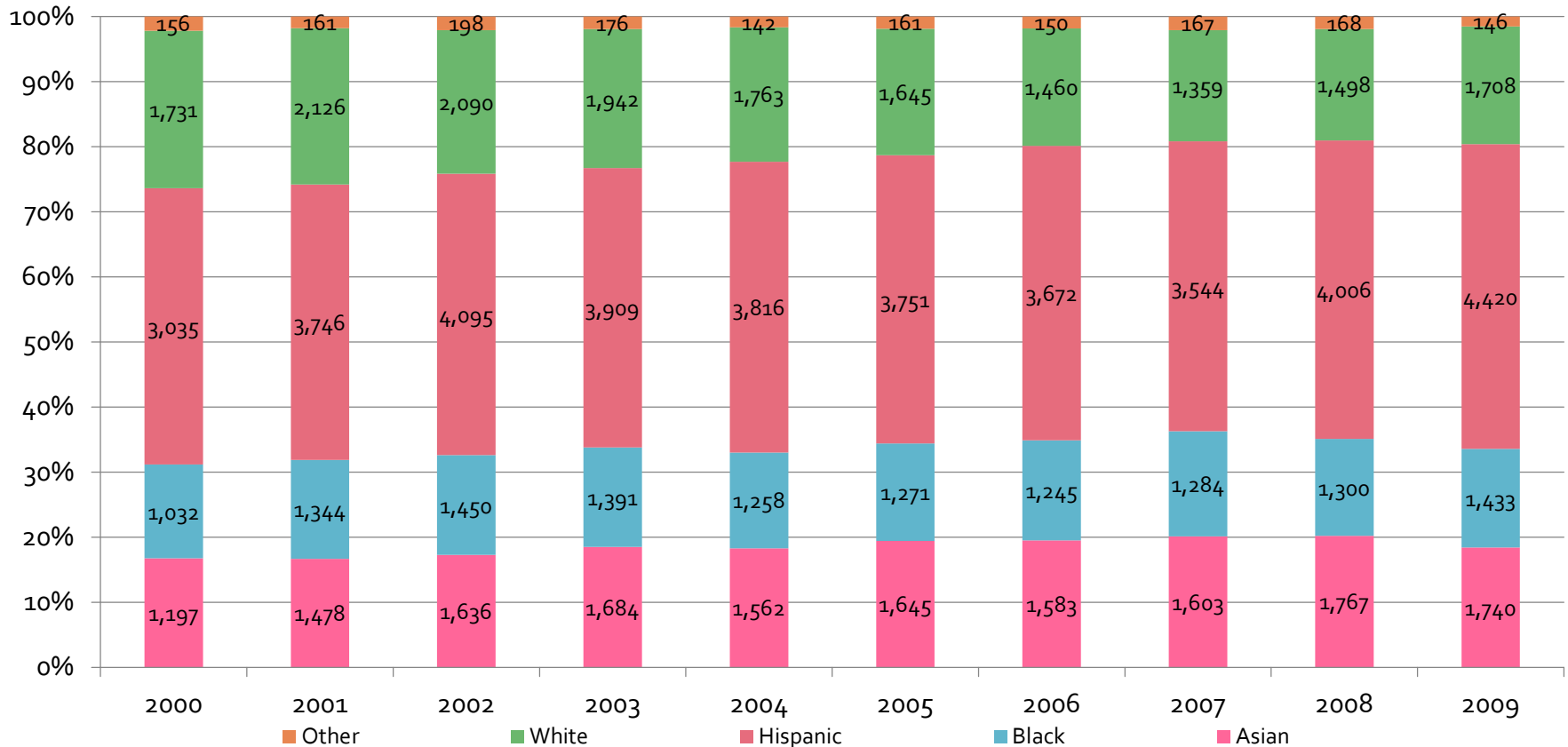
Enrolled by Gender: Fall 2000 - 2009



- **Steady 60 to 40 ratio**

Demographics Characteristics

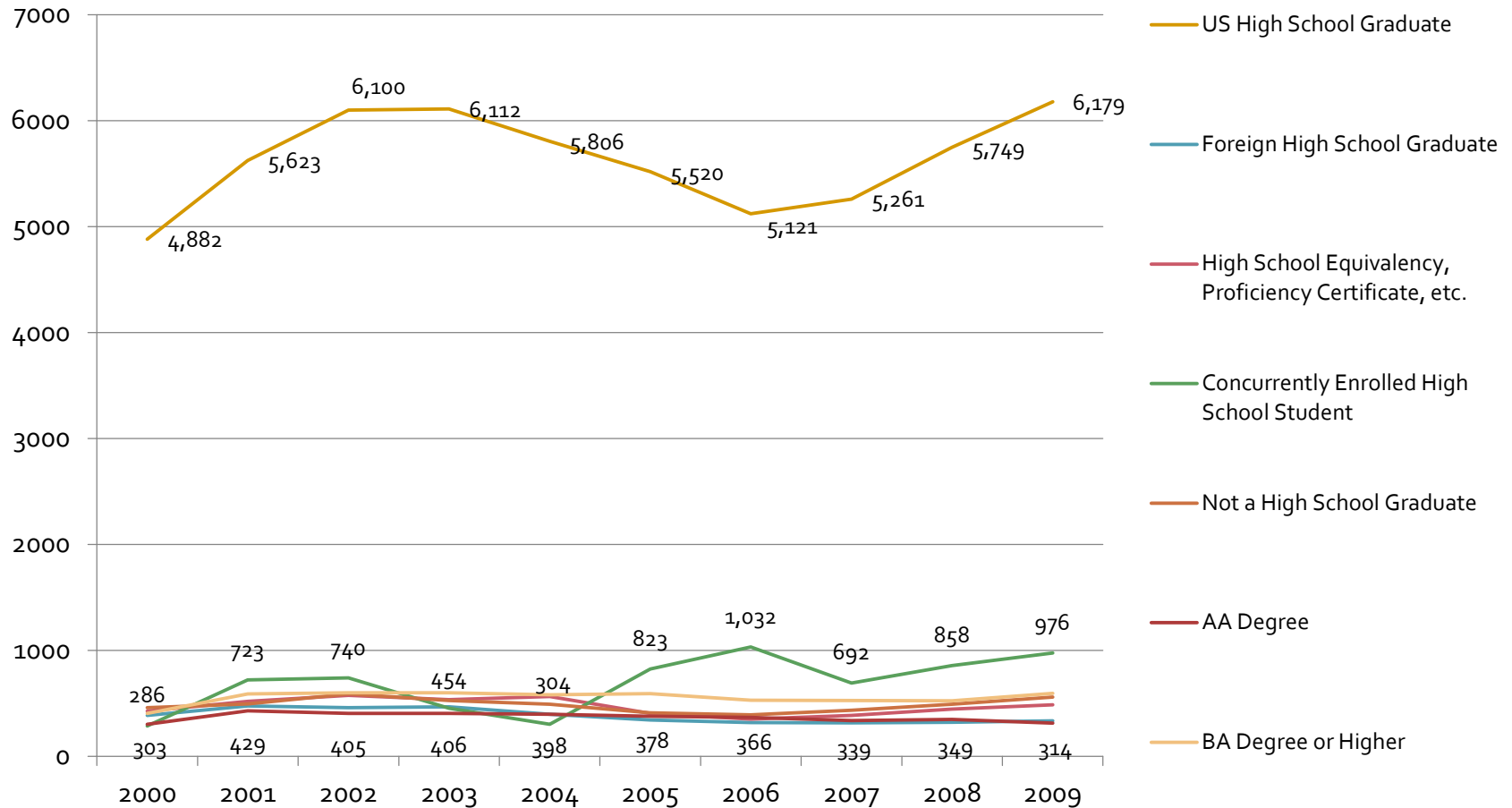
Enrolled by Ethnicity: Fall 2000 - 2009



- Majority of students are Hispanic
- White, Black, and Asian are evenly distributed

Demographics Characteristics

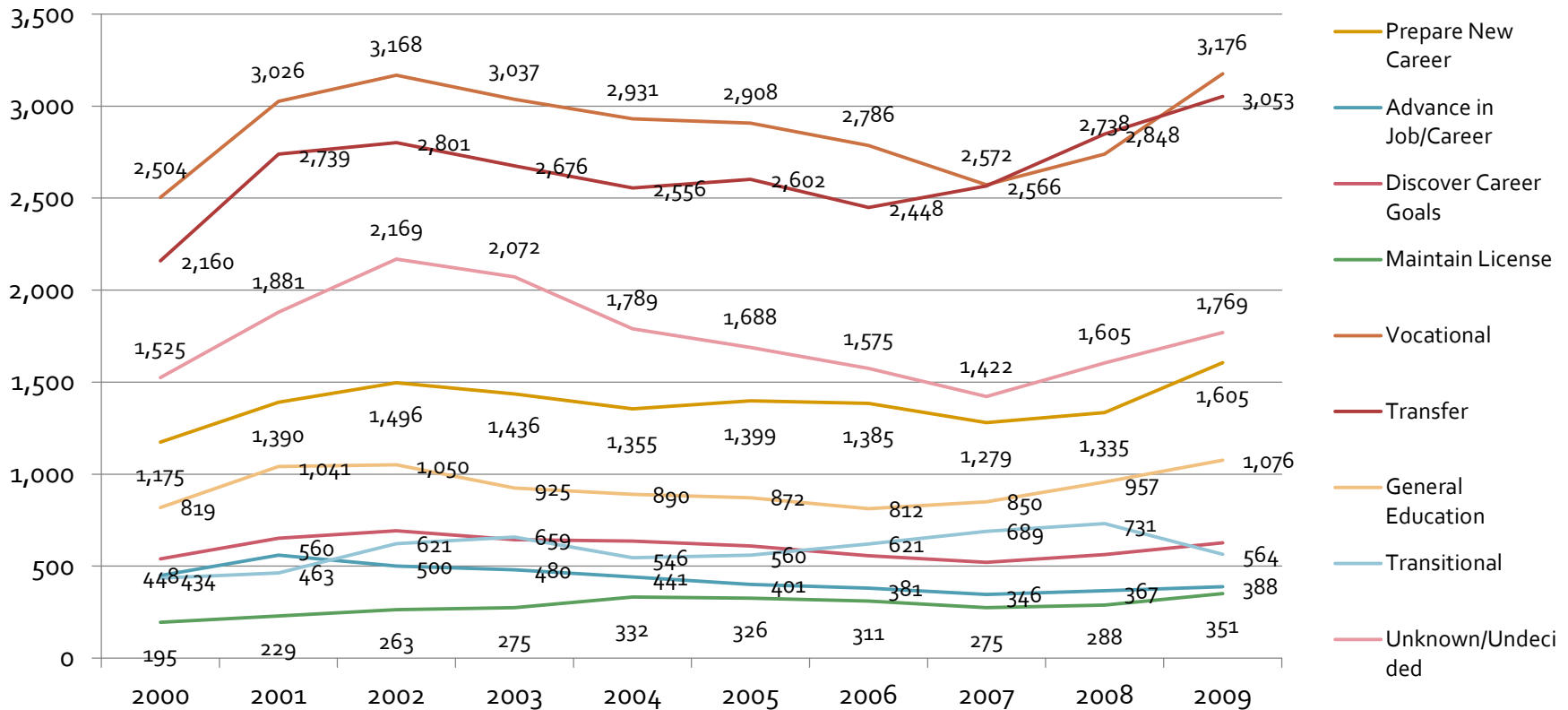
Enrolled by Educational Attainment: Fall 2000- 2009



■ **Majority are US high school graduates**

Transfers

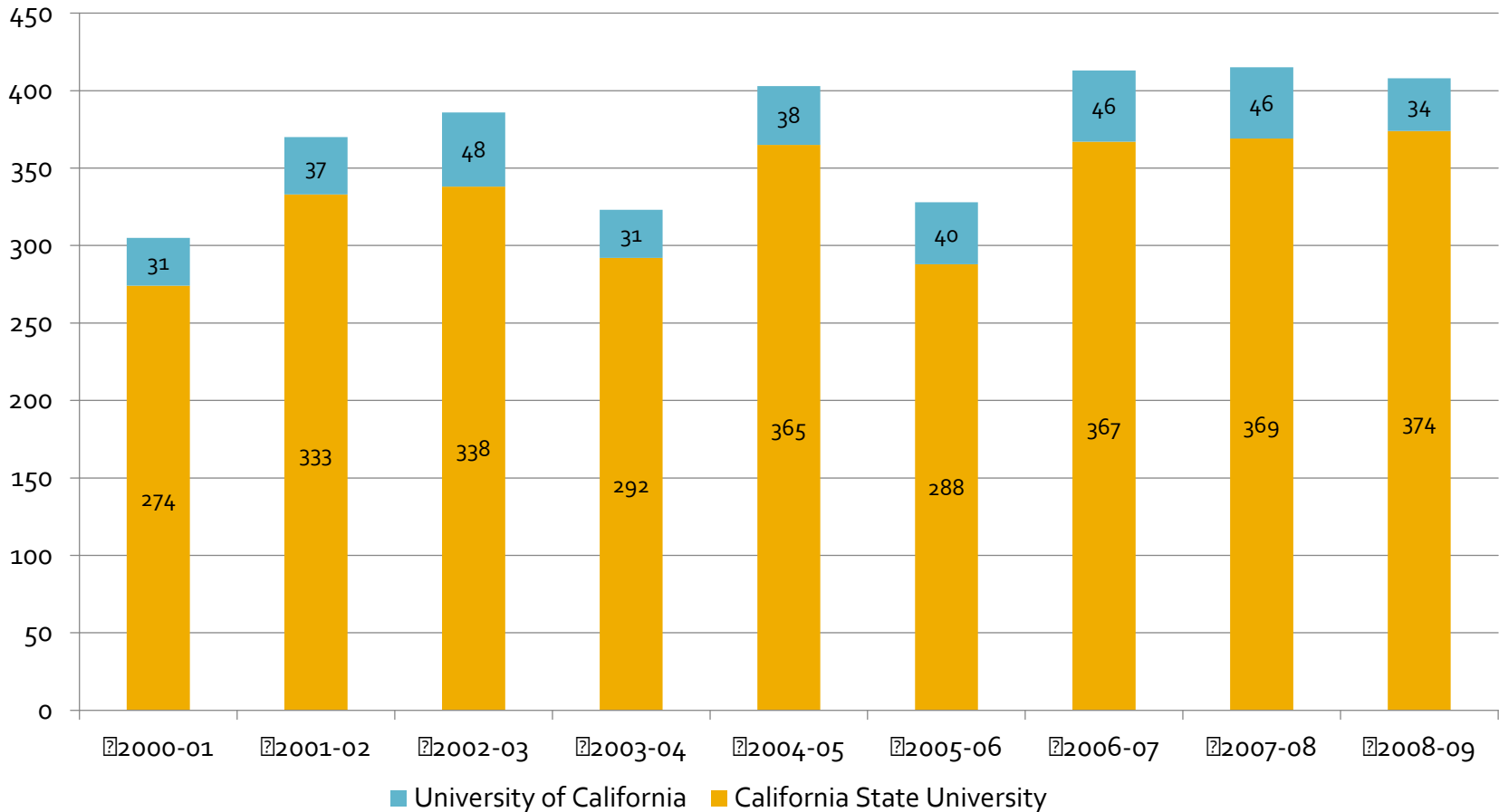
Enrolled by Educational Goal: Fall 2000 - 2009



- **Mostly vocational and transfer**
- **Followed by discover a new career, prepare for a new career, and general education**

Transfers

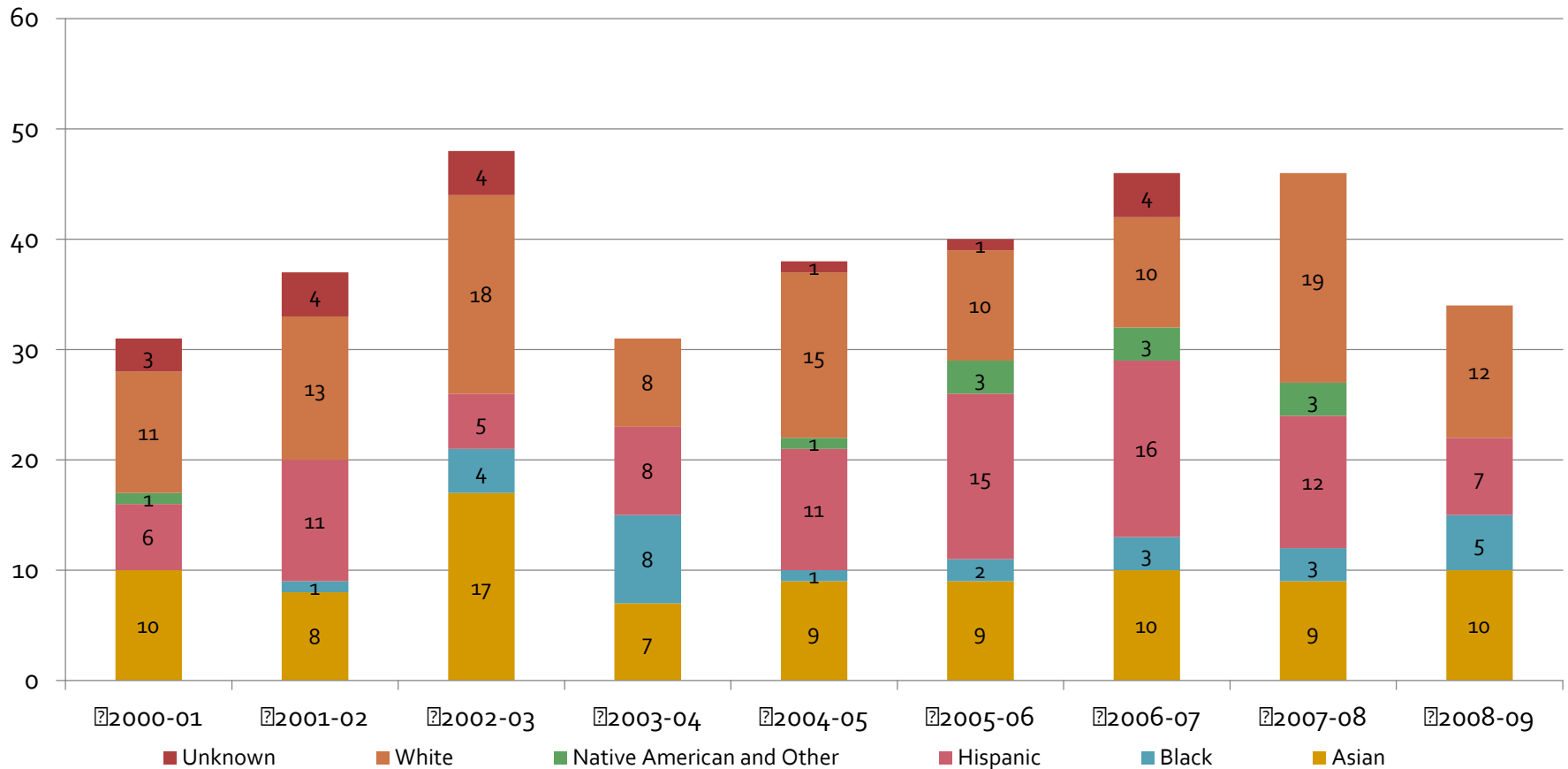
of Transfer Students to UC and CSU: 2000 - 2009



- Consistent numbers of transfers to CSUs and UCs

Transfers

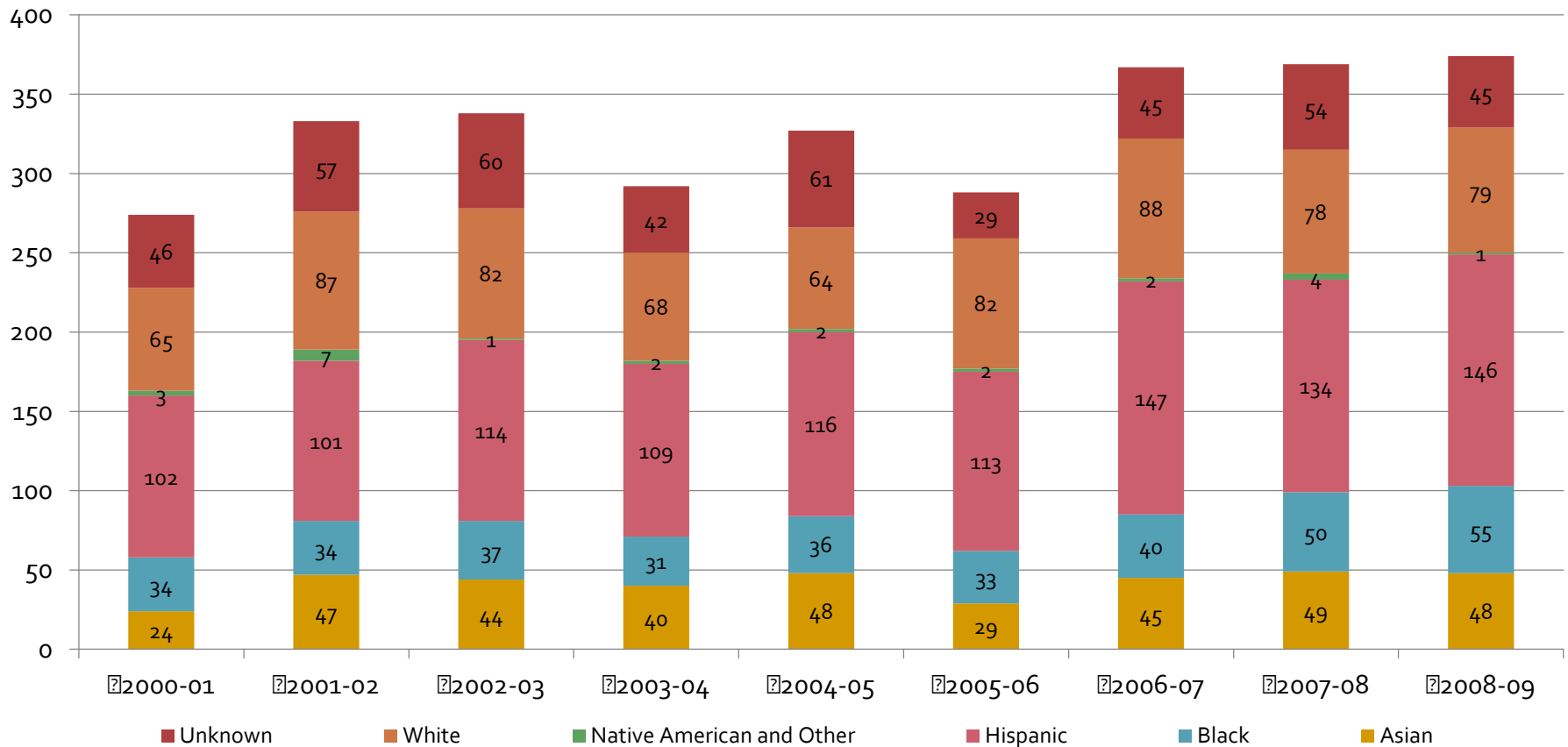
of Transfers to a UC by Ethnicity: Fall 2000 - 2009



- **Majority of transfers is consistently White students**

Transfers

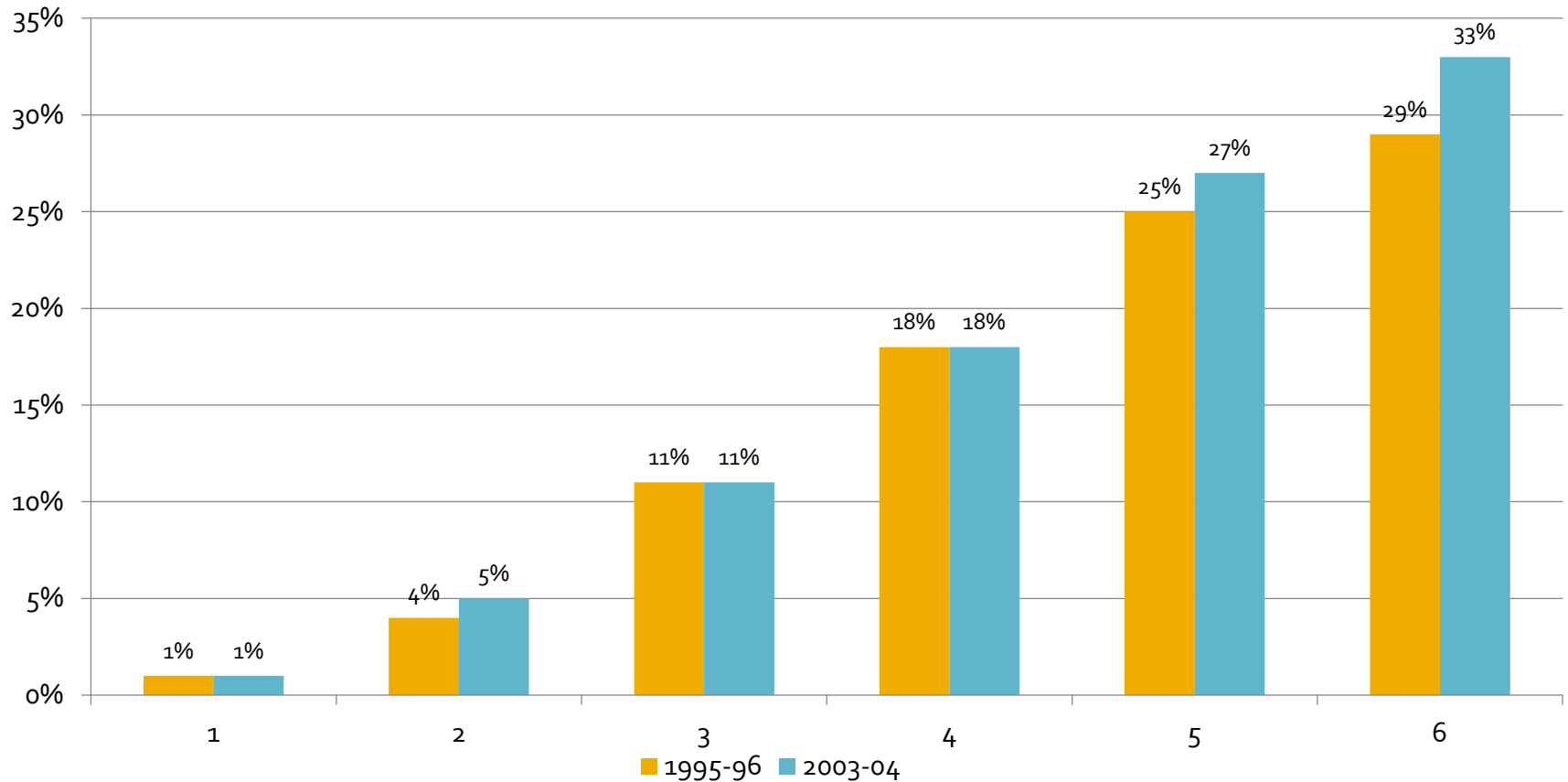
of Transfers to a CSU by Ethnicity: Fall 2000 - 2009



- **Majority of transfers is consistently Hispanic followed by White students**

Transfers

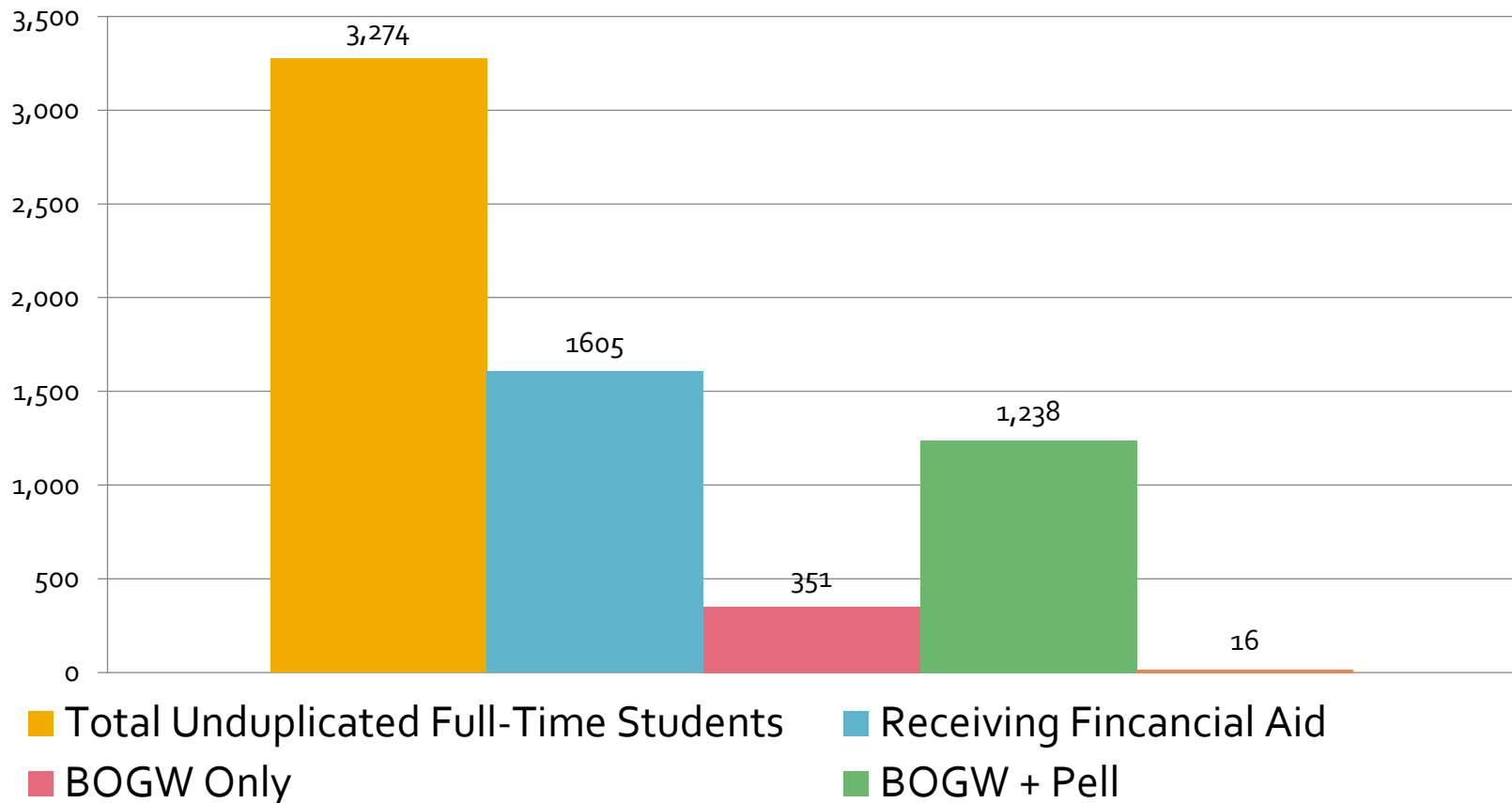
Transfer Velocity Cohort Report (6 Years)



- **Within 6 years, 33% of students transfer who aimed to transfer**

Financial Aid

of Full-Time Resident Students Receiving Financial Aid: 2007-2008 Academic Year



- **~75% of students receive some form of financial aid**

Math Sequence

MATHEMATICS COURSE SEQUENCE

Non-Transferable, A.A. degree Applicable Courses (ovals)

