



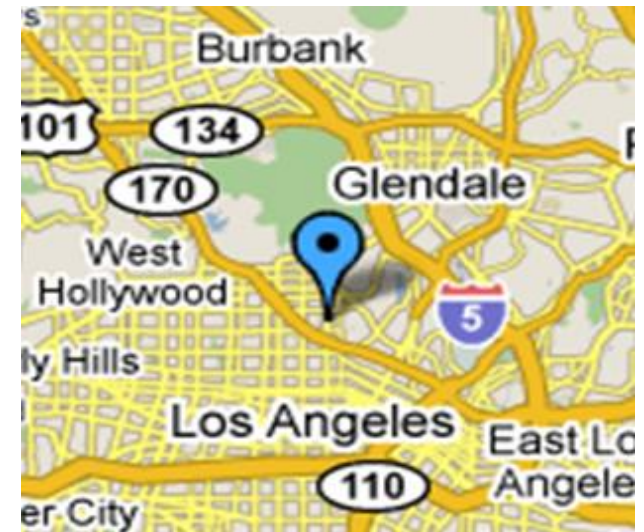
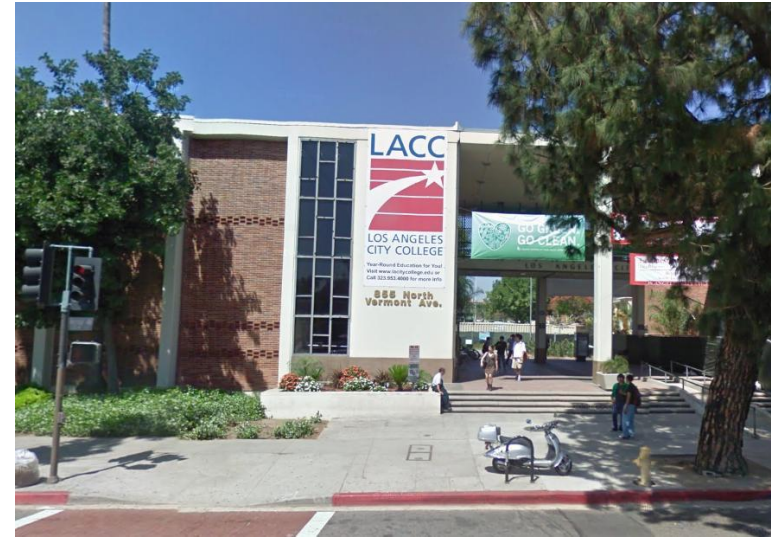
Los Angeles City College

Content

- **Introduction**
- **Enrollment Trends**
- **Demographic Characteristics**
- **Transfers**
- **Financial Aid**
- **Math Sequence**

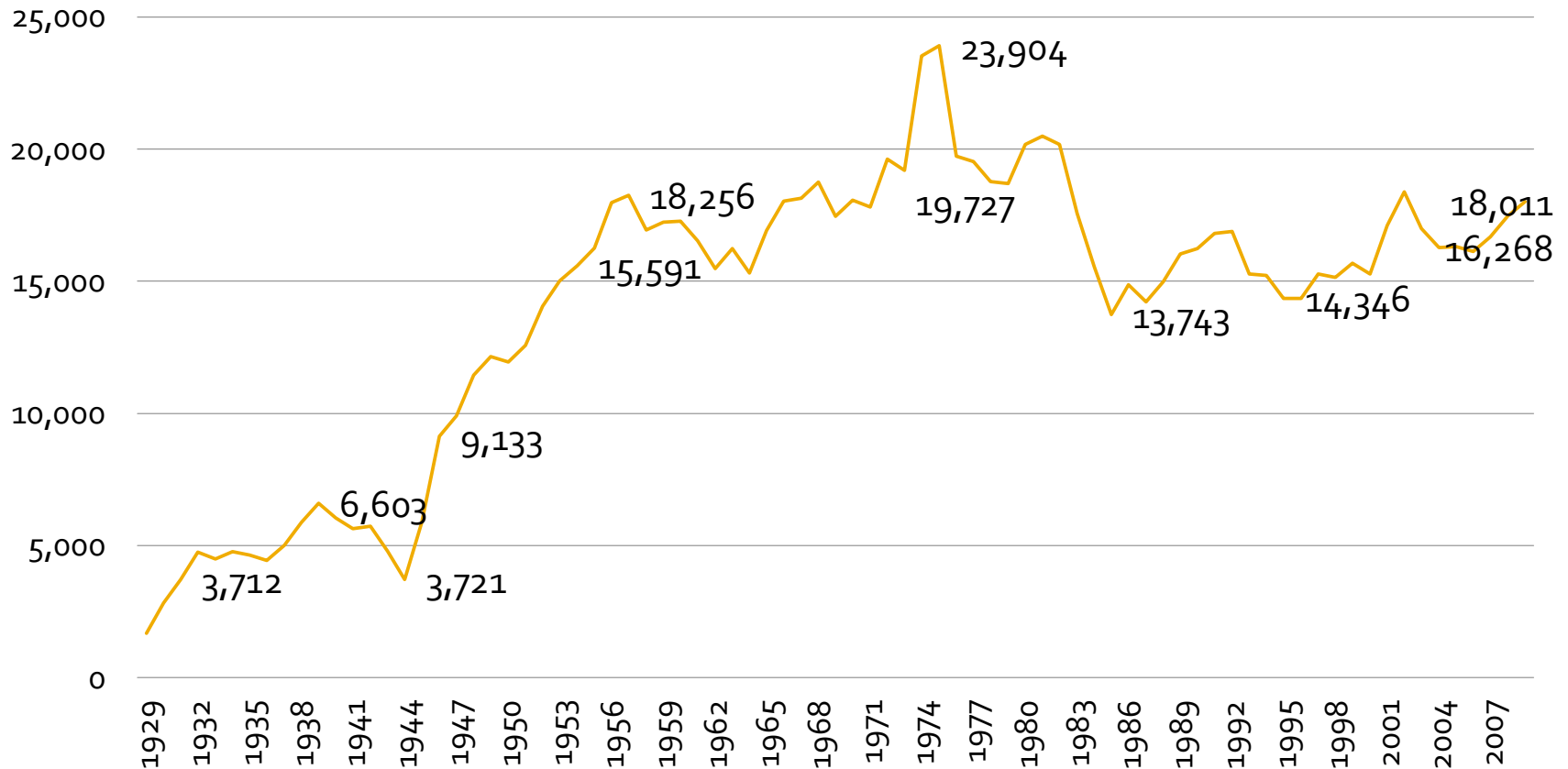
Introduction

- **Located in the east corner of Hollywood, just minutes from Hollywood and Downtown LA**
- **Students enrolled: 20,598 (2012)**
- **Website: www.lacitycollege.edu**



Enrollment Trends

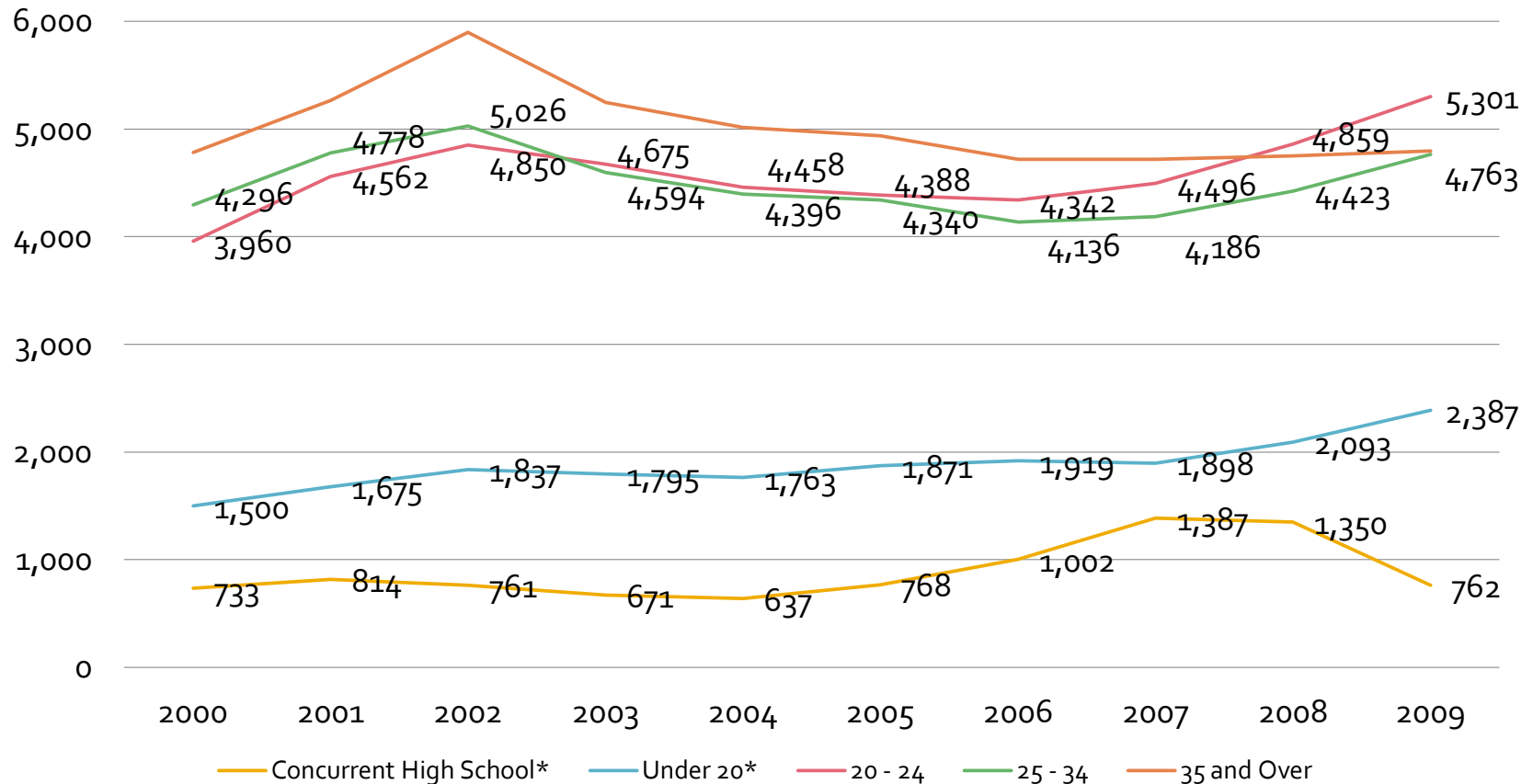
Enrolled: Fall 1929 to 2009



- Enrollment increased between 1929 and 1975; decreased after 1975 and increased after 2001

Enrollment Trends

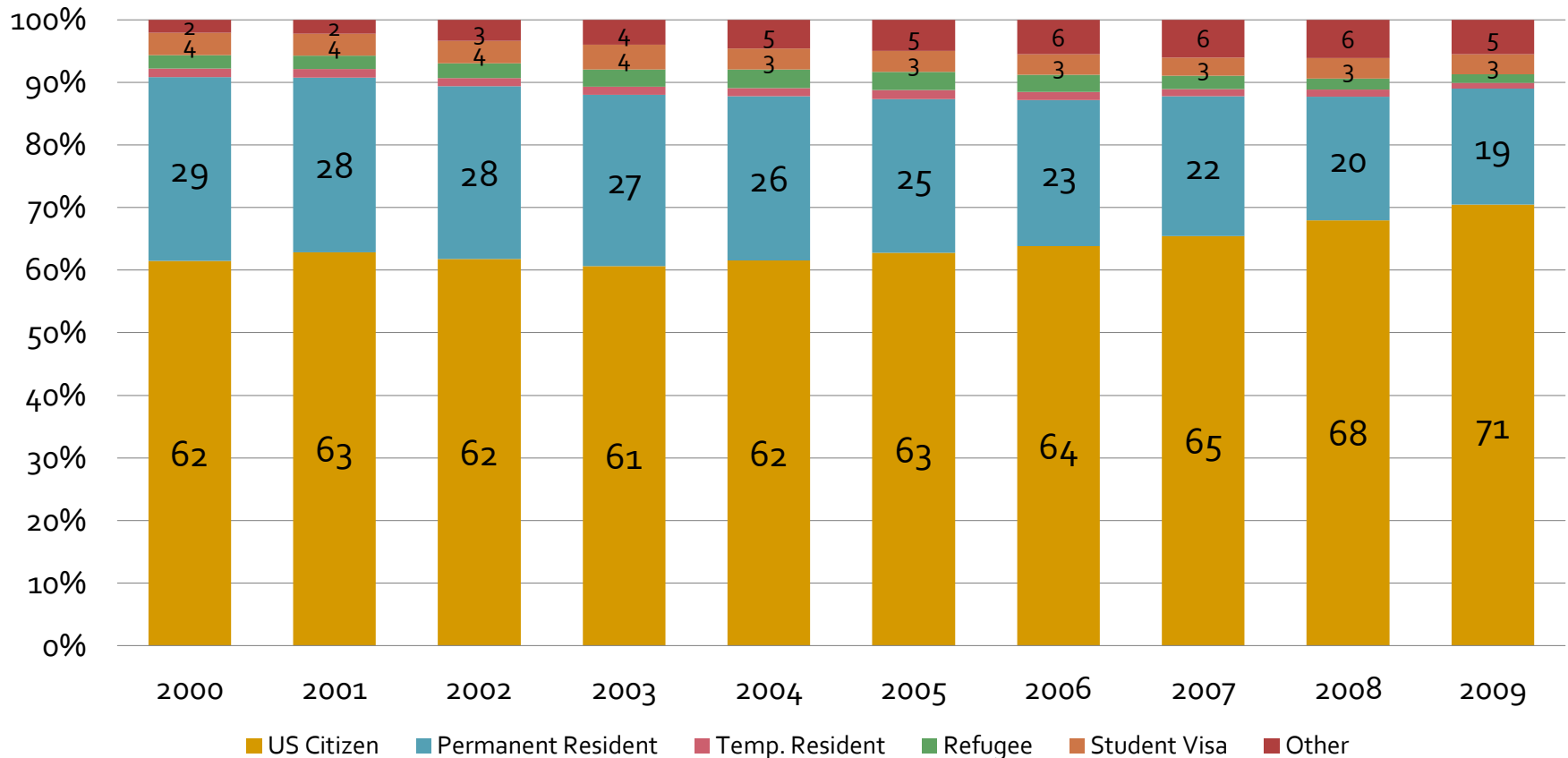
Enrolled by Age: Fall 2000 - 2009



- Between 2006 and 2009, enrollment of under 20, 20-24 and 25-34 age groups increased

Enrollment Trends

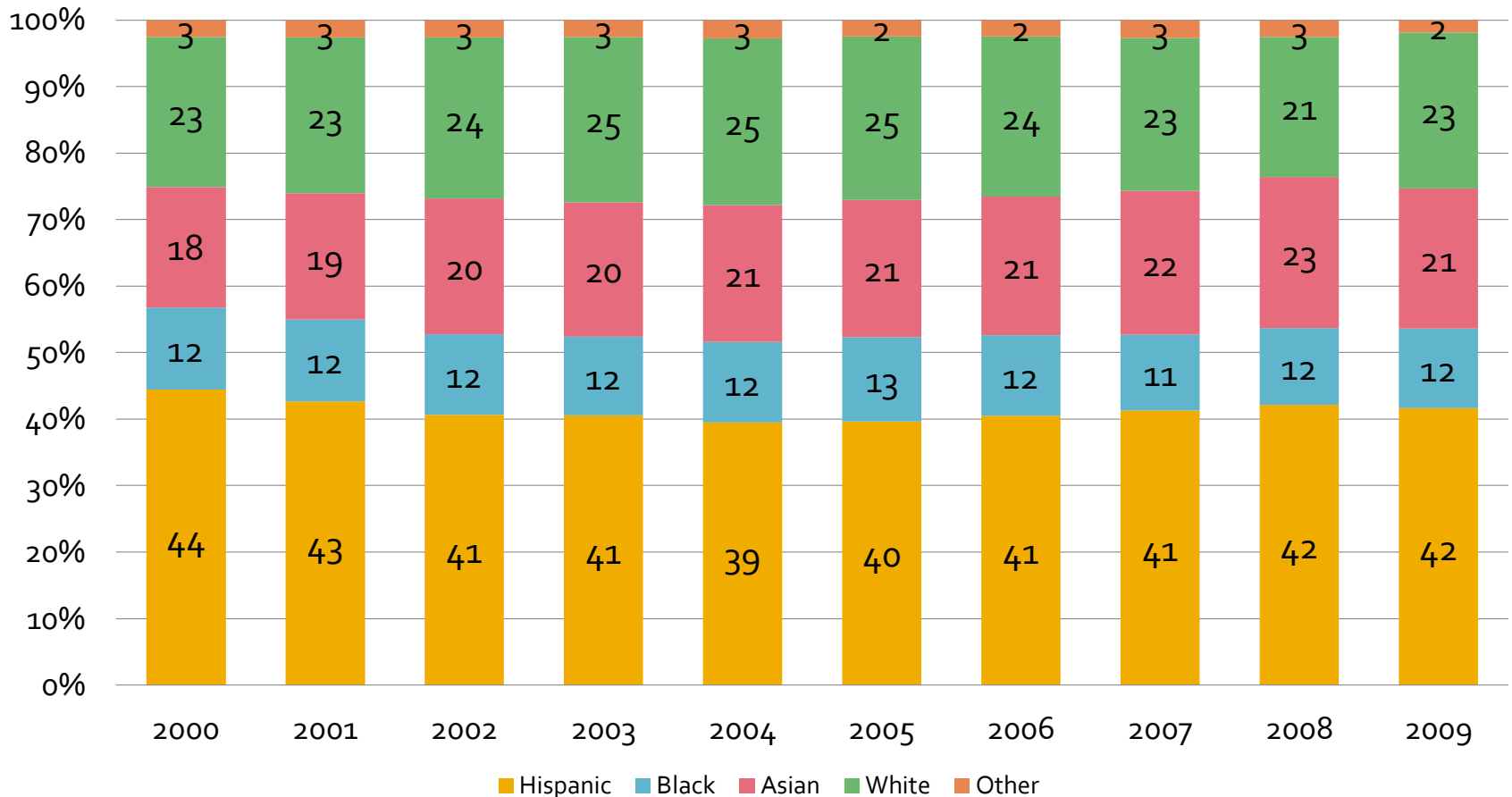
% Enrolled by Citizenship: Fall 2000 - 2009



- **Between 2000 and 2009, enrollment of US Citizens increased; enrollment of Permanent Residents decreased during the same period**

Enrollment Trends

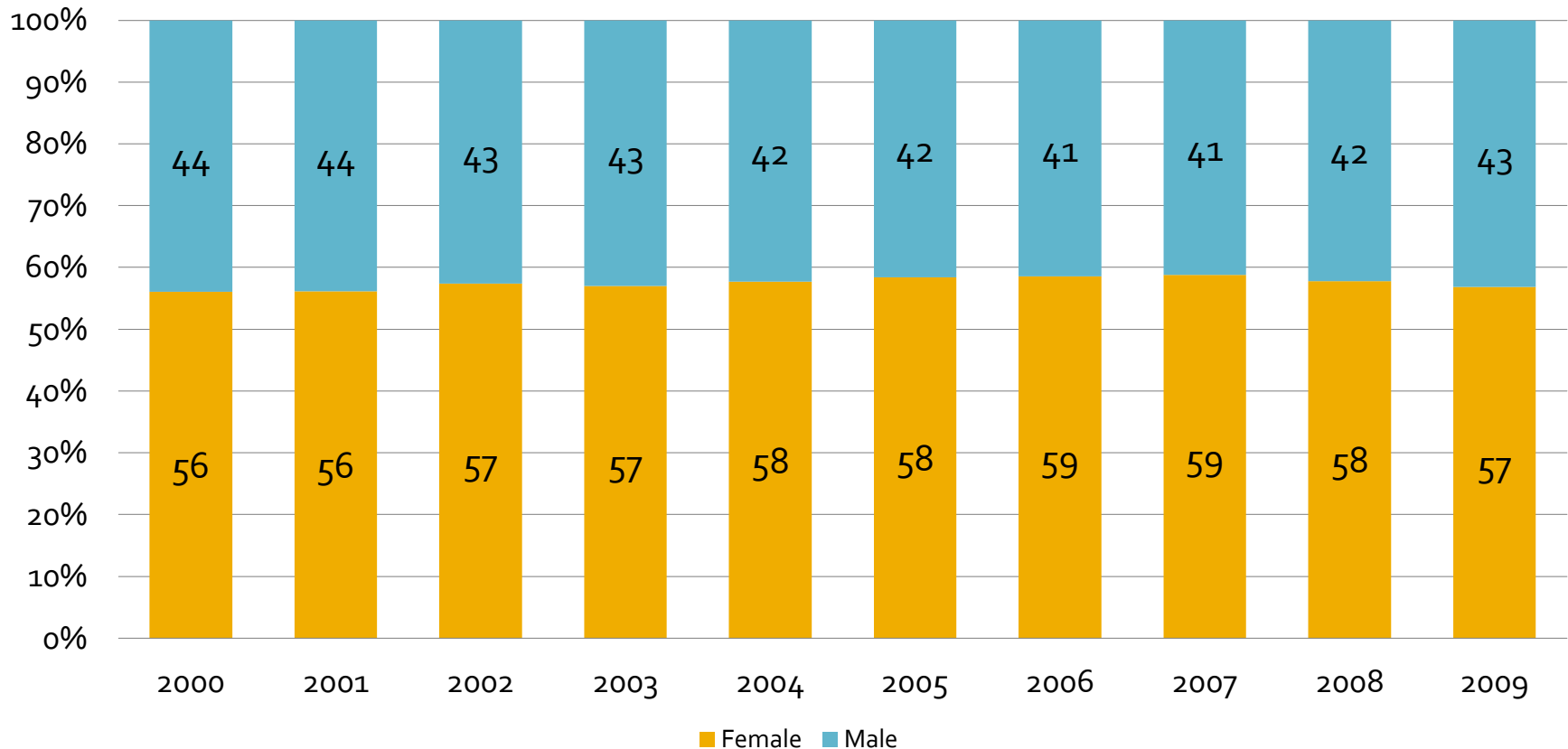
% Enrolled By Ethnicity: Fall 2000 - 2009



■ **Between 2000 and 2009, Hispanics were the largest ethnic student group**

Enrollment Trends

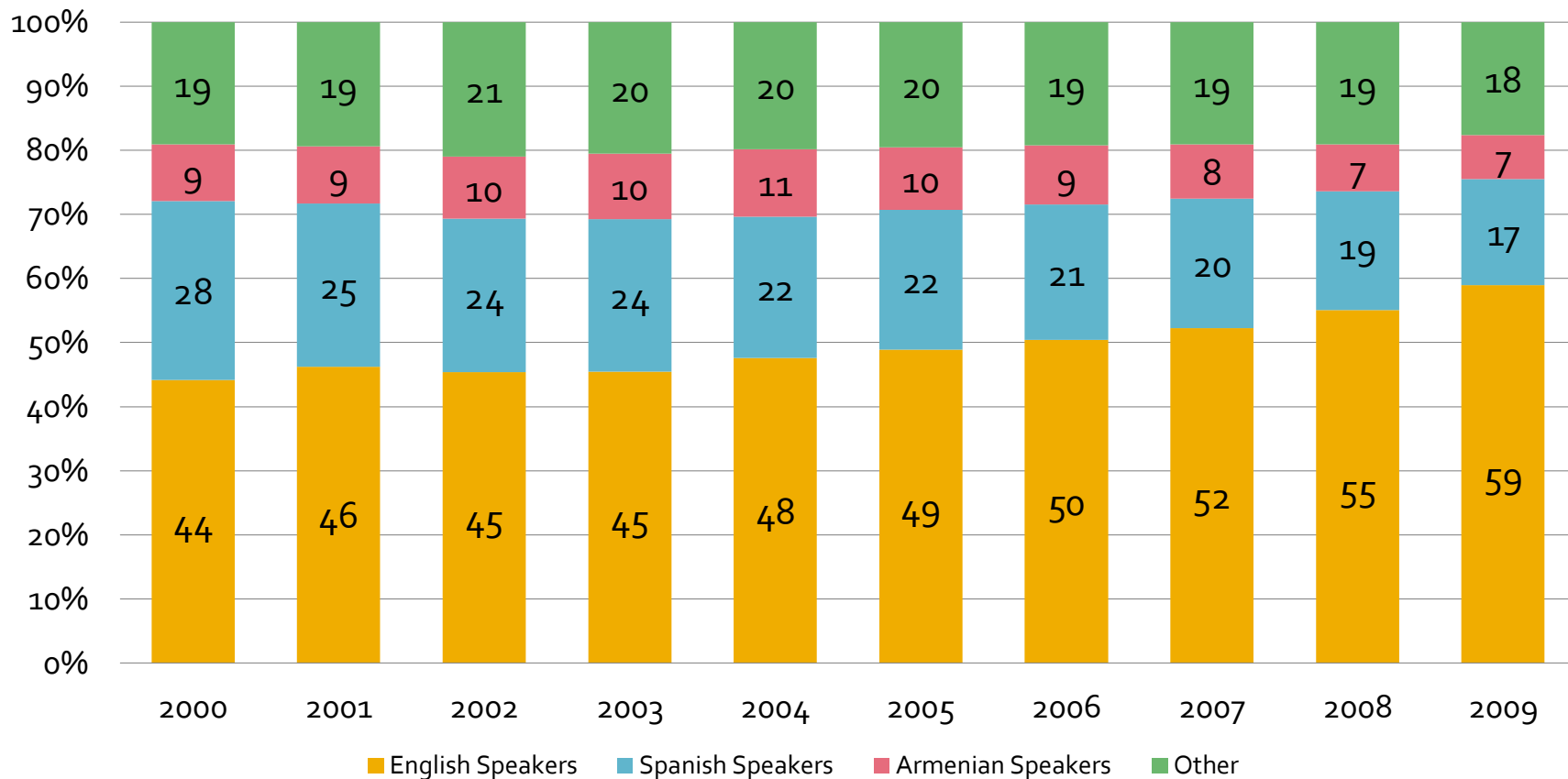
% Enrolled by Gender: Fall 2000 - 2009



- **Between 2000 and 2009, there was a larger proportion of females in the college.**

Enrollment Trends

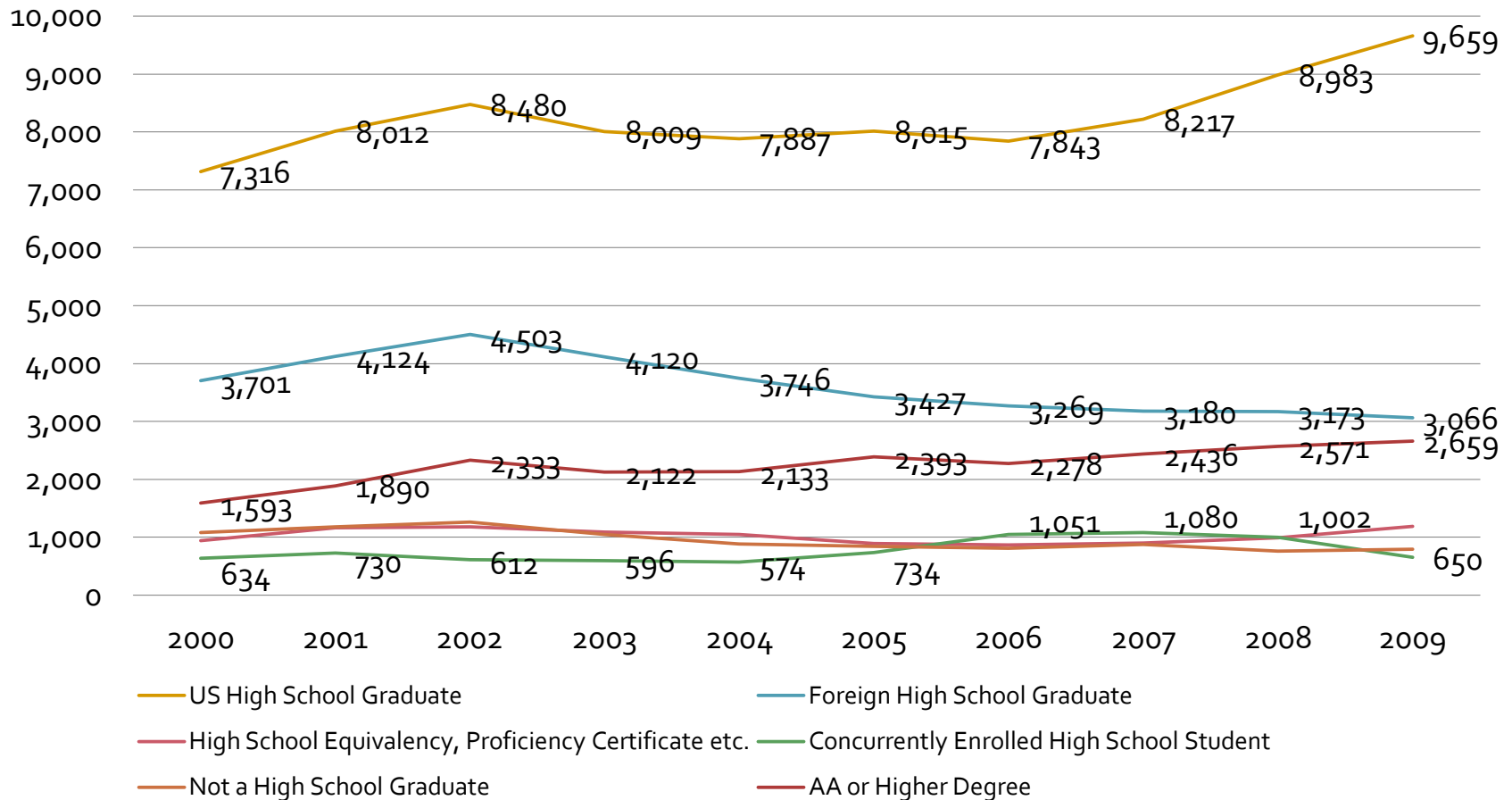
% Enrolled by Home Language: Fall 2000 - 2009



- Between 2000 and 2009, the percent of English speakers enrolled in LACC increased; the opposite occurred for Spanish speakers

Demographics Characteristics

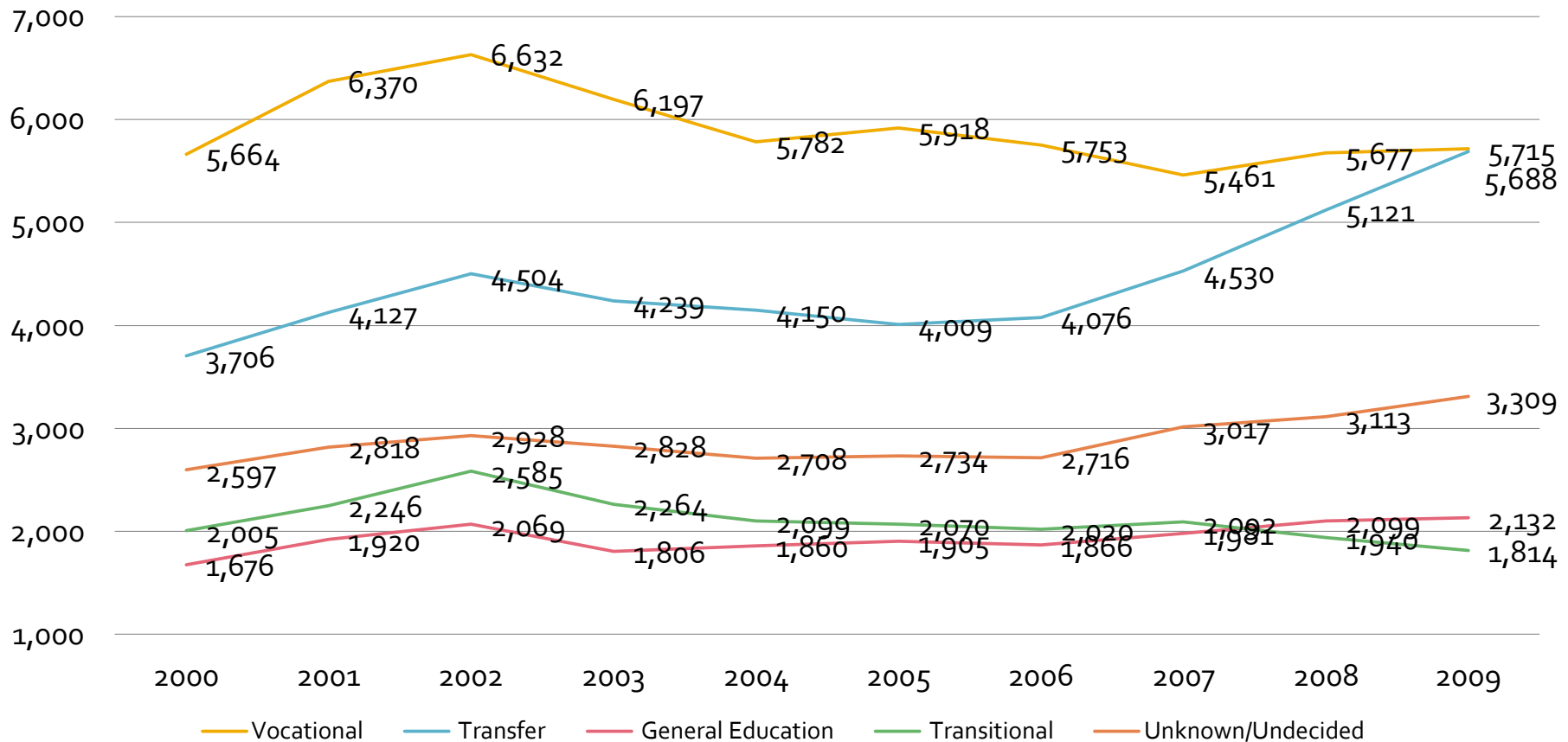
Enrolled by Educational Attainment: Fall 1989 - 2009



Between 2000 and 2009, the majority of LACC students were U.S. high school graduates.

Transfers

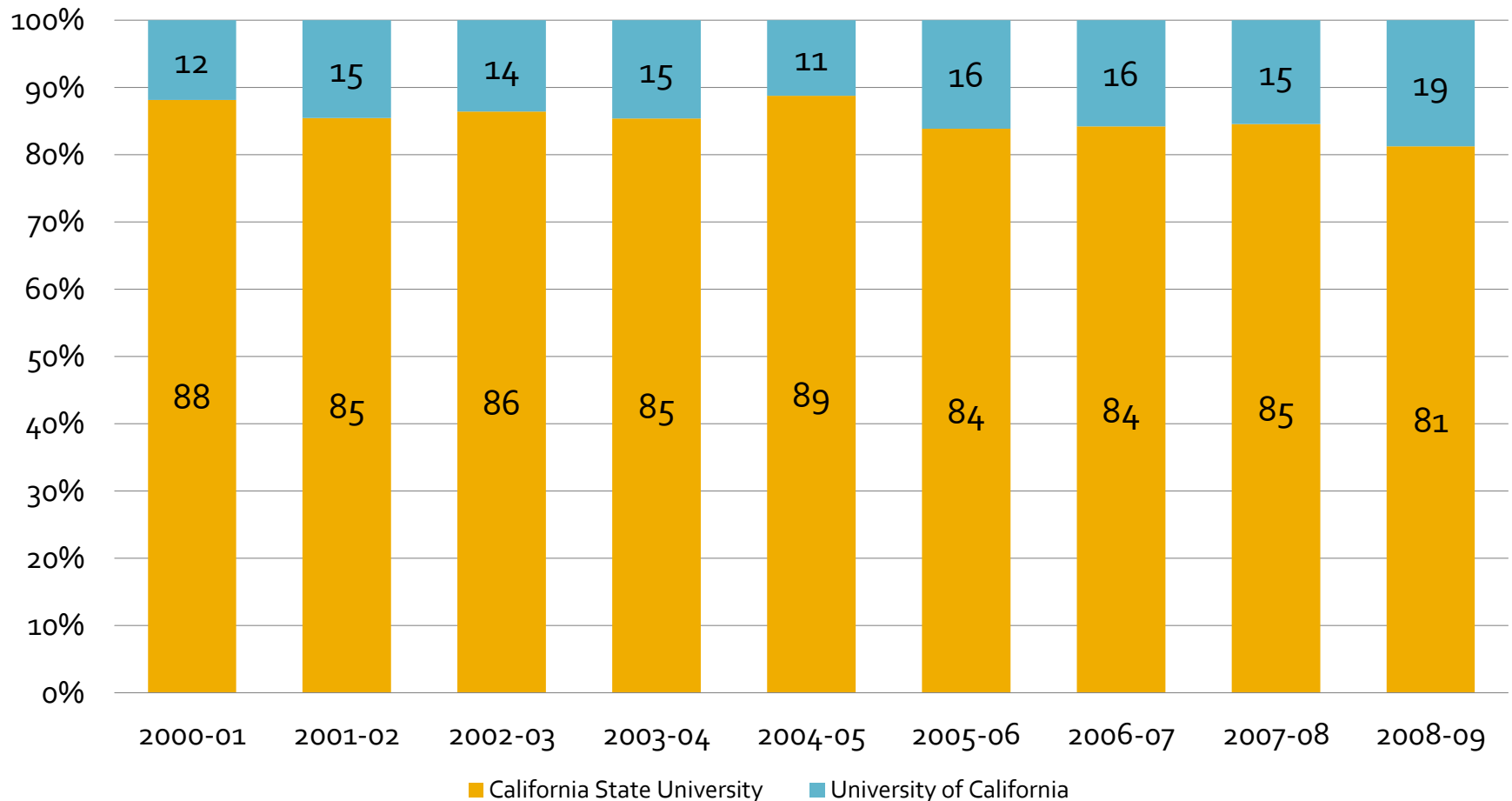
Enrolled by Educational Goal: Fall 2000 - 2009



- Between 2000 and 2009, an increasing number of students expressed an interest to transfer.

Transfers

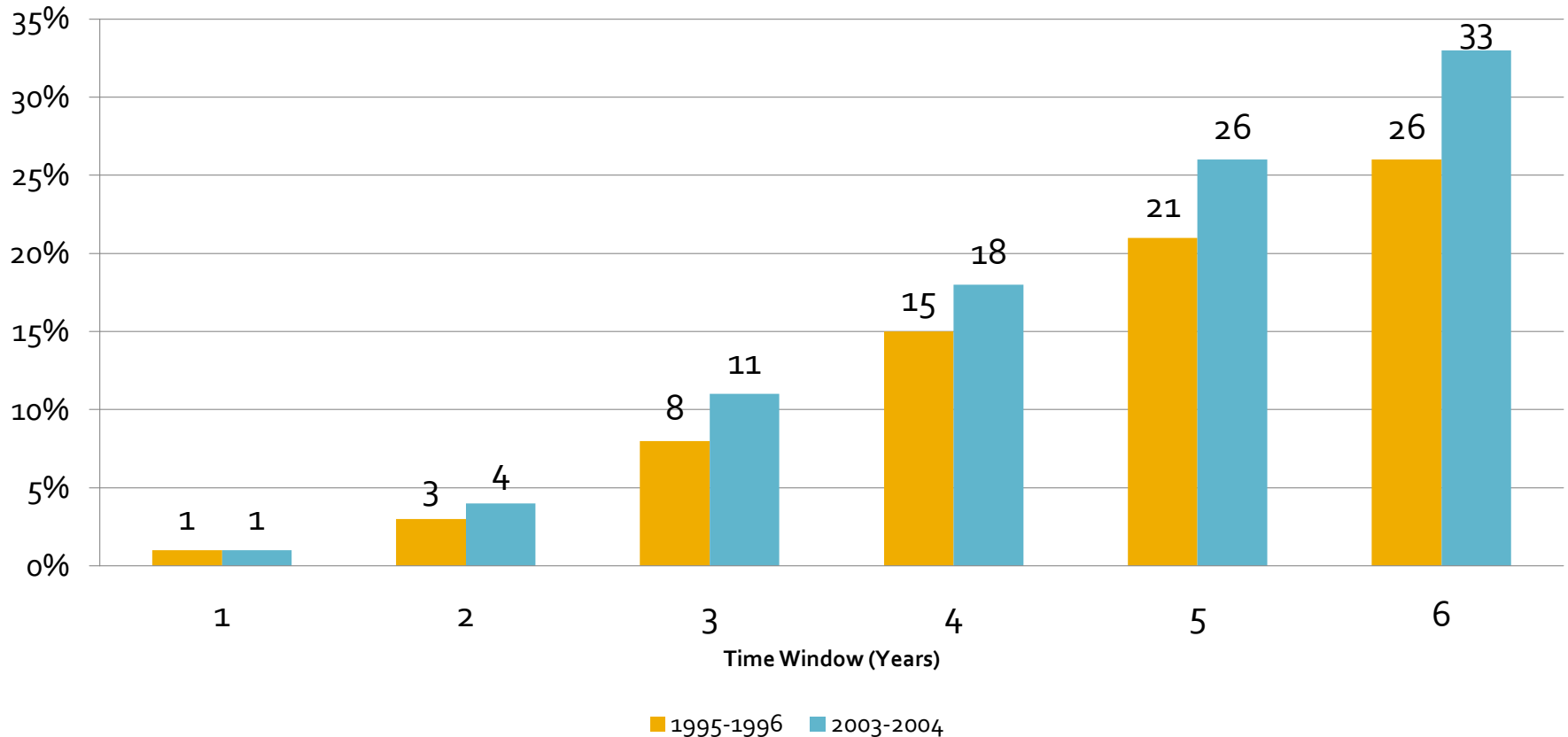
% of Transfers to UC and CSU: Fall 2000 to 2009



- **Between 2000 and 2009, the majority of LACC students transferred to a CSU.**

Transfers

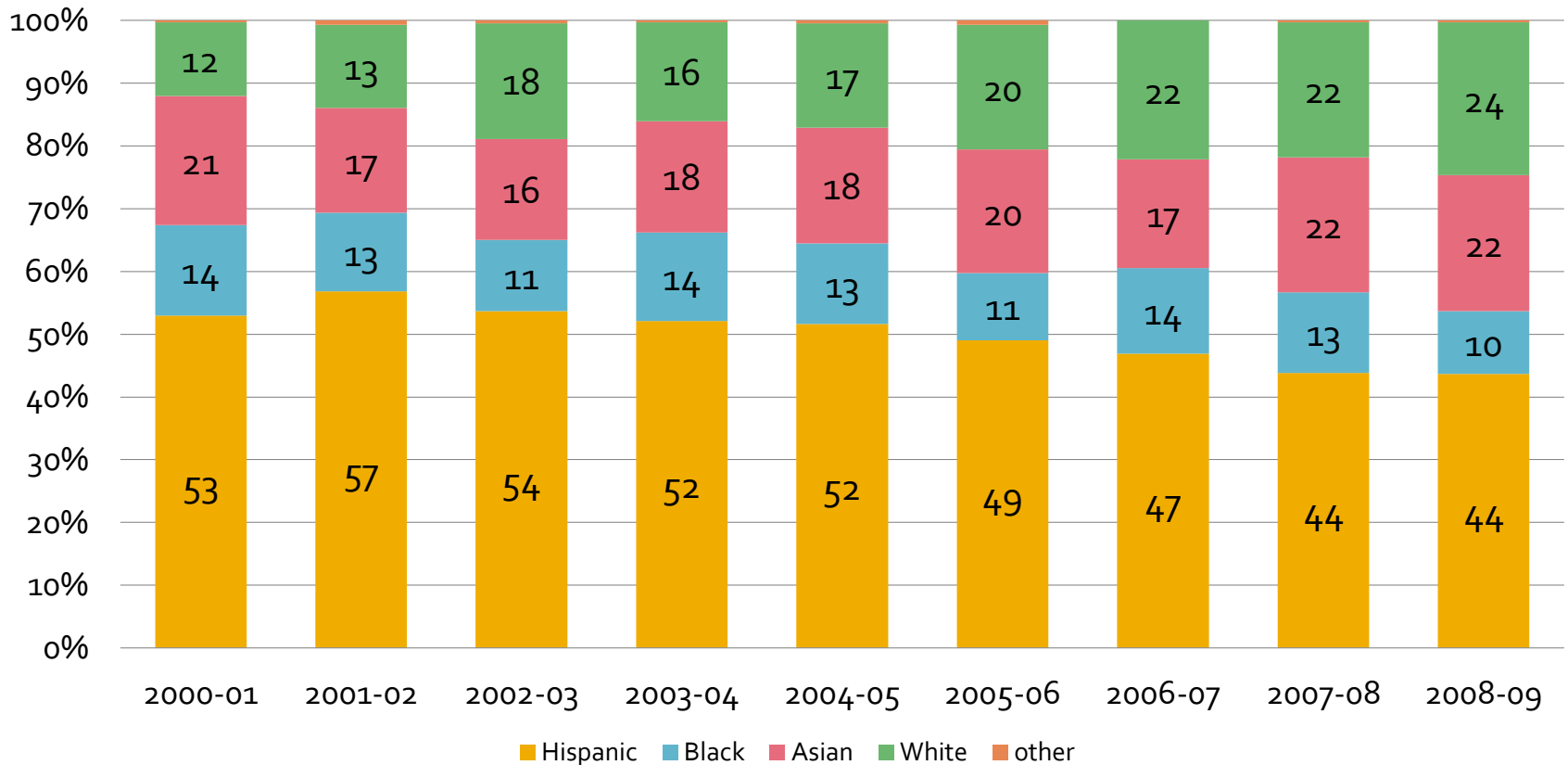
Transfer Velocity Cohort Report (6 years)



- **The percent of students who transfer within 6 years marginally increased between 1995 and 2003.**

Transfers

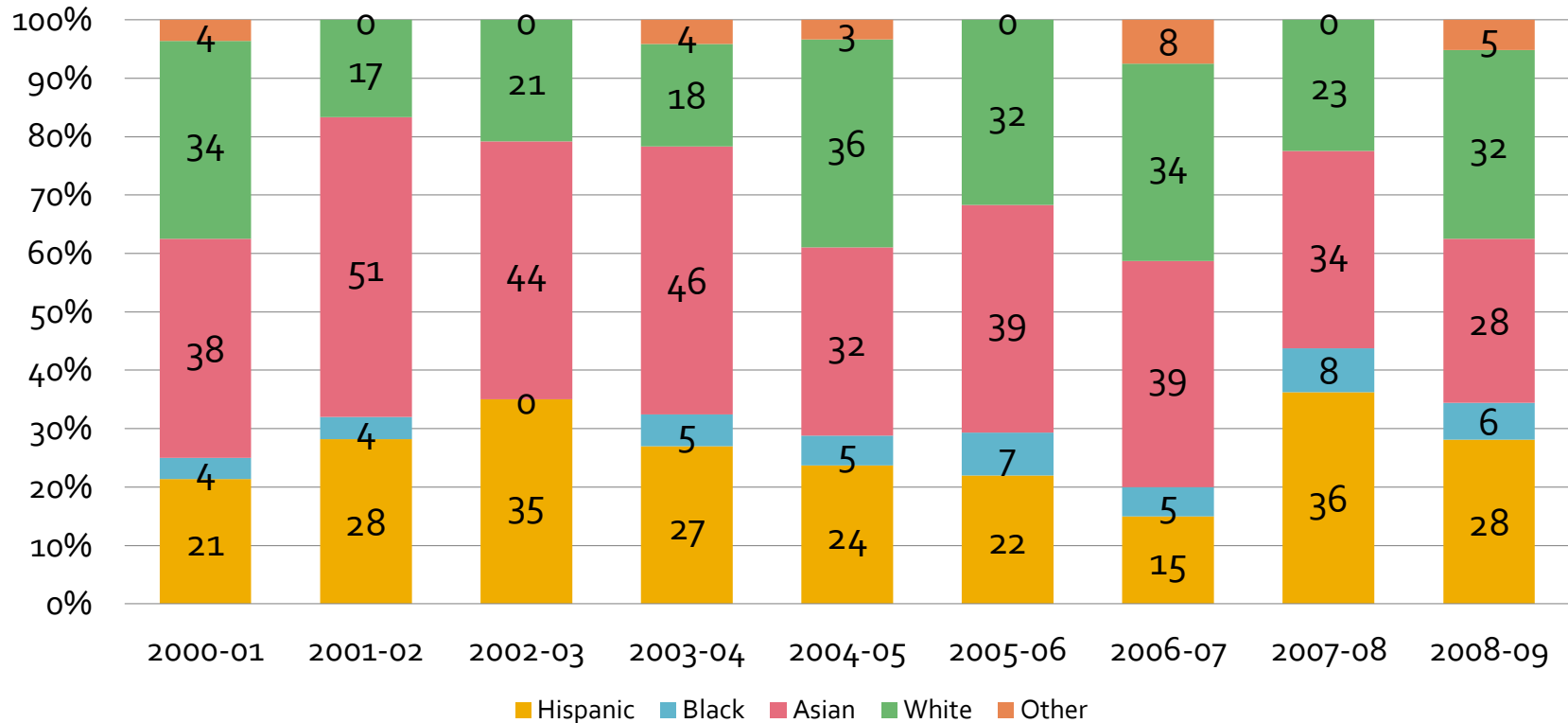
% of Transfer Students to CSU By Ethnicity: Fall 2000 - 2009



- Between 2000 and 2009, Hispanics represented the largest proportion of ethnic students who transferred to a CSU

Transfers

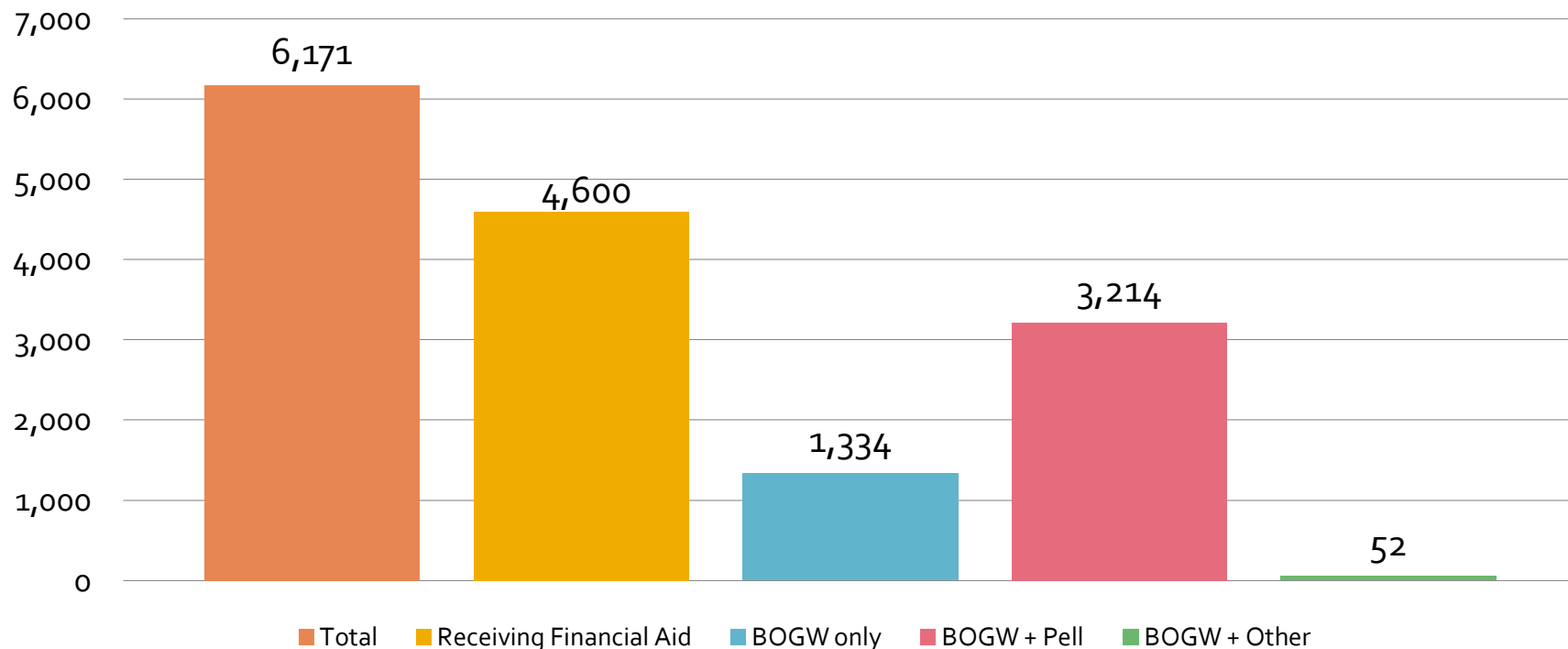
% of Transfer Students to UC By Ethnicity: Fall 2000 – 2009



- Between 2000 and 2009, a diverse group of students transferred to UC; Asian and white students represented the majority of UC transfers during this time period.**

Financial Aid

of Full-Time Resident Students Receiving Financial Aid 2007-2008 Academic Year



- **In 2007, over a third of LACC students received some type of financial aid.**

Math Sequence (2009)

LACC MATHEMATICS COURSE SEQUENCE

